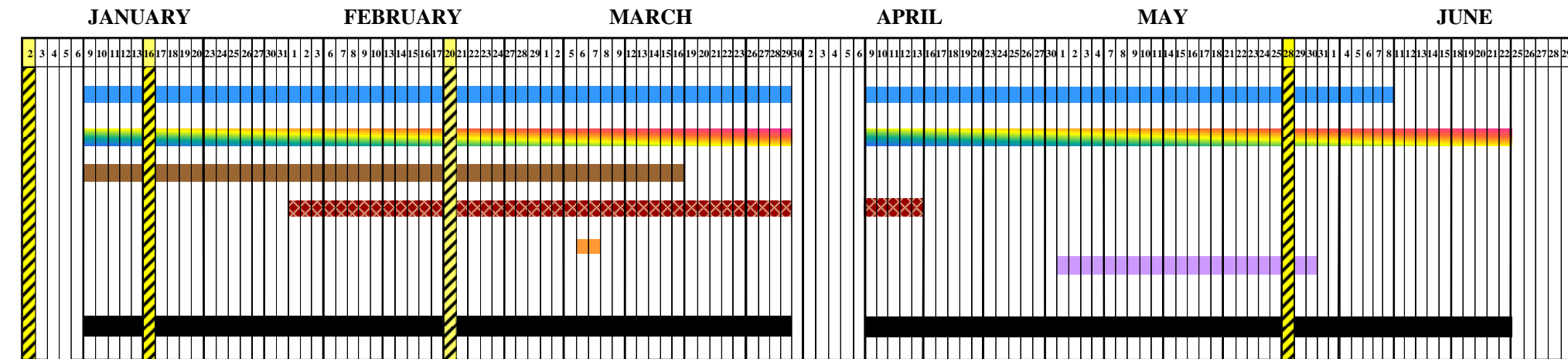
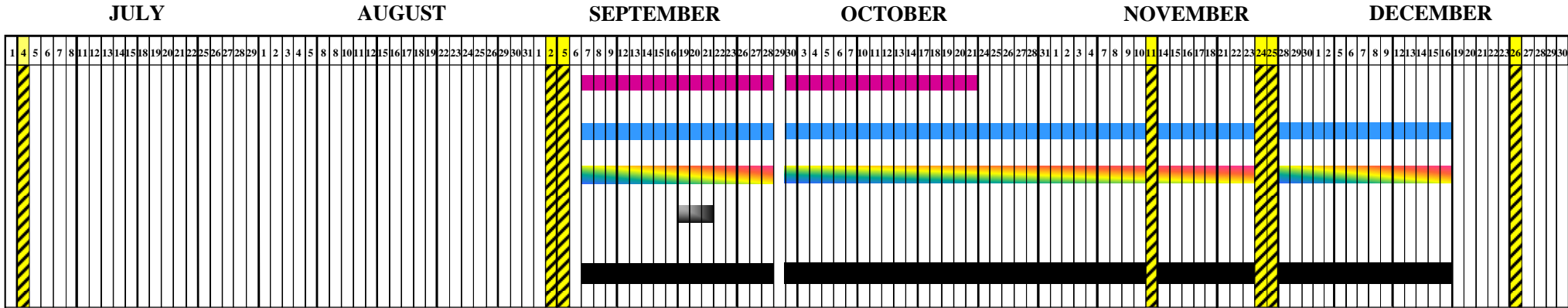


LOS ANGELES UNIFIED SCHOOL DISTRICT

2011-2012 TESTING CALENDAR

SINGLE TRACK, Elementary Schools, Grades K-6



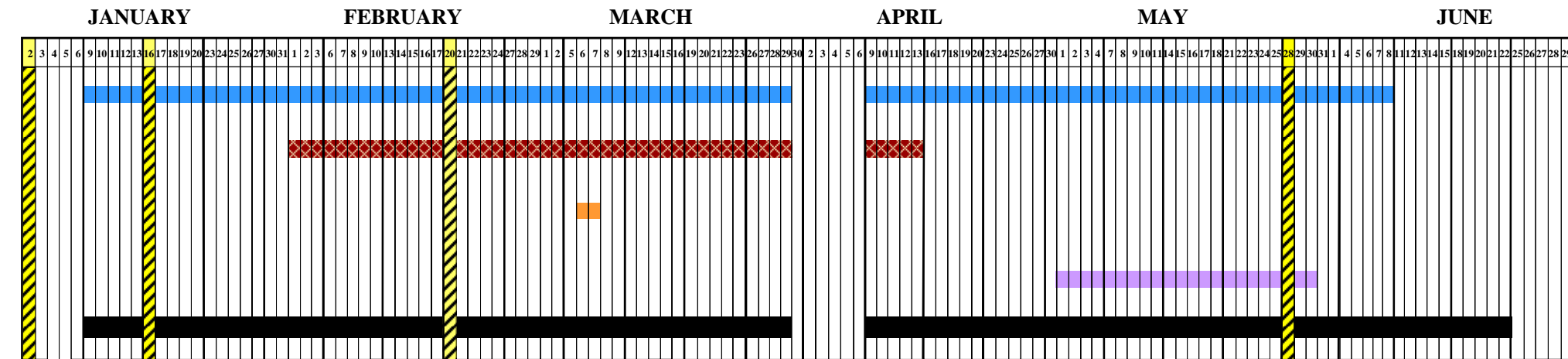
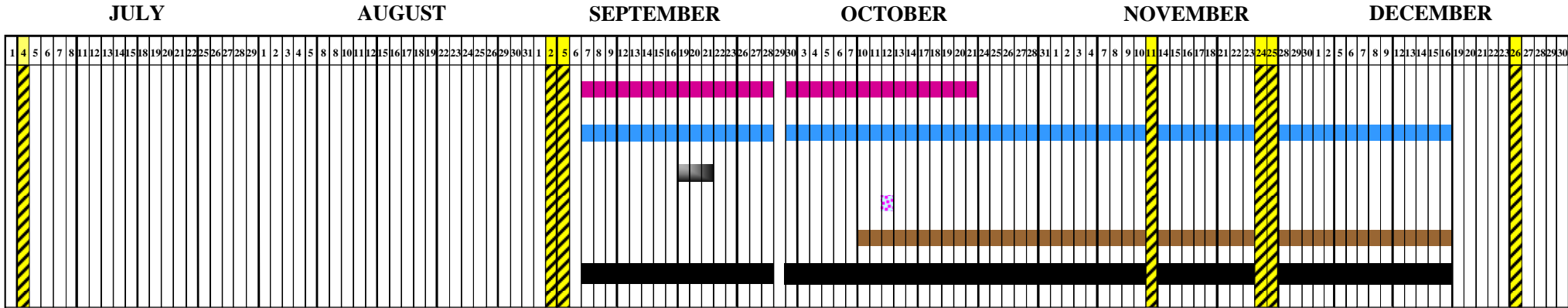
National / State / District Mandated Tests

- | | | | | |
|--|--|-----------------------|---|--------------------|
| Annual CA English Language Development Test (CELDT) | National Assessment of Educational Progress (NAEP) | CST/CMA Field Test | CA Standards Tests (CST),
CA Alternate Performance Assessment (CAPA),
CA Modified Assessment (CMA), &
Standards-based Tests in Spanish (STS) | Instructional Days |
| Initial CA English Language Development Test (CELDT) | CA Physical Fitness Test | CA Writing Assessment | | |
| Kindergarten Checklist | | | | |

LOS ANGELES UNIFIED SCHOOL DISTRICT

2011-2012 TESTING CALENDAR

SINGLE TRACK, Middle Schools, Grades 6-8



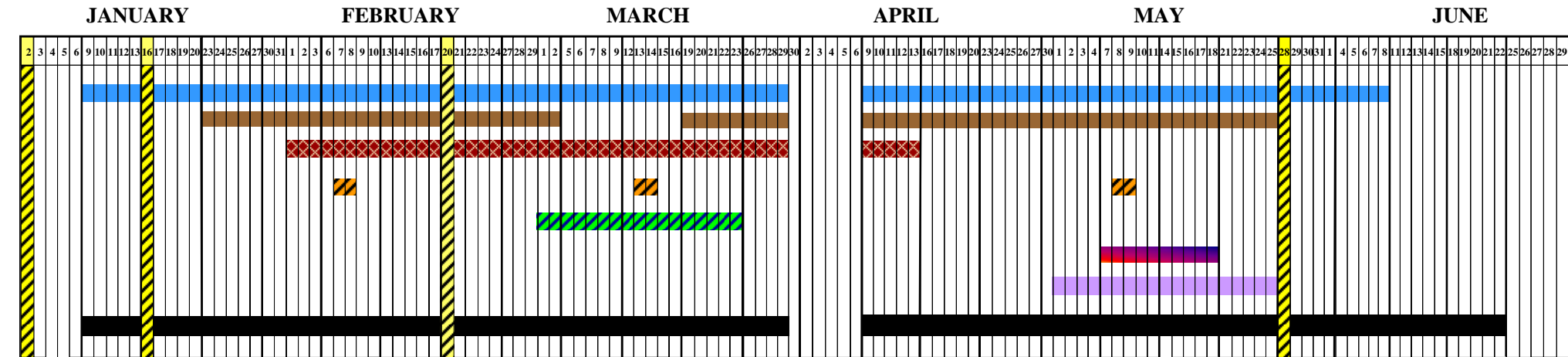
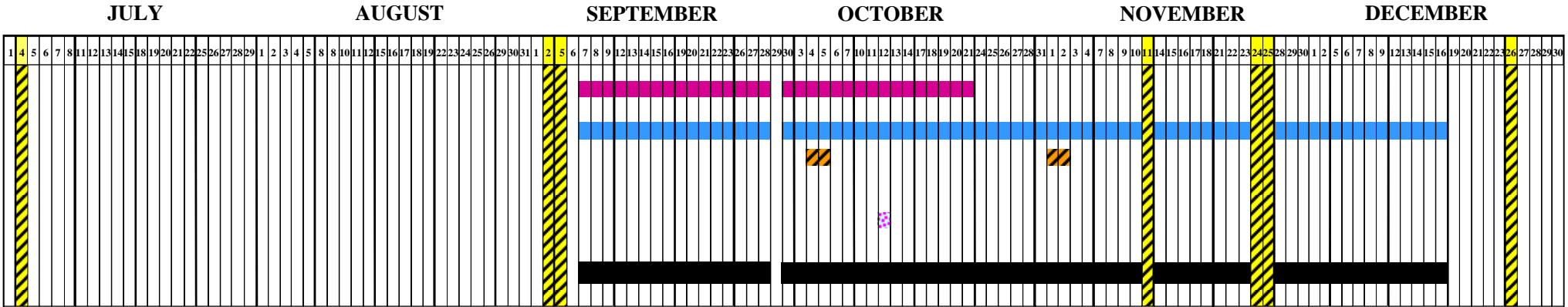
National / State / District Mandated Tests

- | | | | |
|--|--|--|--|
| <ul style="list-style-type: none"> Annual CA English Language Development Test (CELDT) Initial CA English Language Development Test (CELDT) National Assessment of Educational Progress (NAEP) | <ul style="list-style-type: none"> CA Physical Fitness Test CA Writing Assessment | <ul style="list-style-type: none"> CST/CMA Field Test PSAT | <ul style="list-style-type: none"> CA Standards Tests (CST), CA Alternate Performance Assessment (CAPA), CA Modified Assessment (CMA), & Standards-based Tests in Spanish (STS) Instructional Days |
|--|--|--|--|

LOS ANGELES UNIFIED SCHOOL DISTRICT

2011-2012 TESTING CALENDAR

SINGLE TRACK, High Schools, Grades 9-12



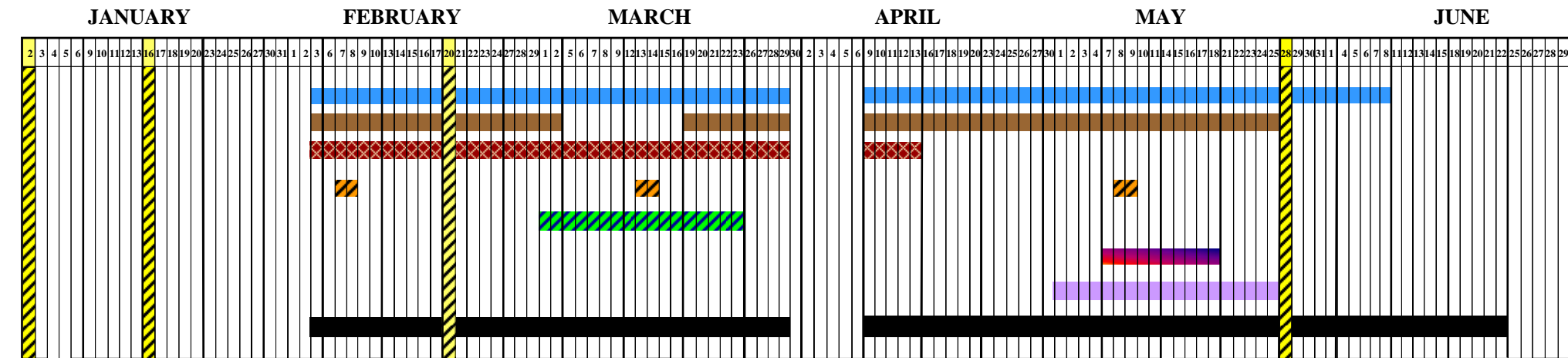
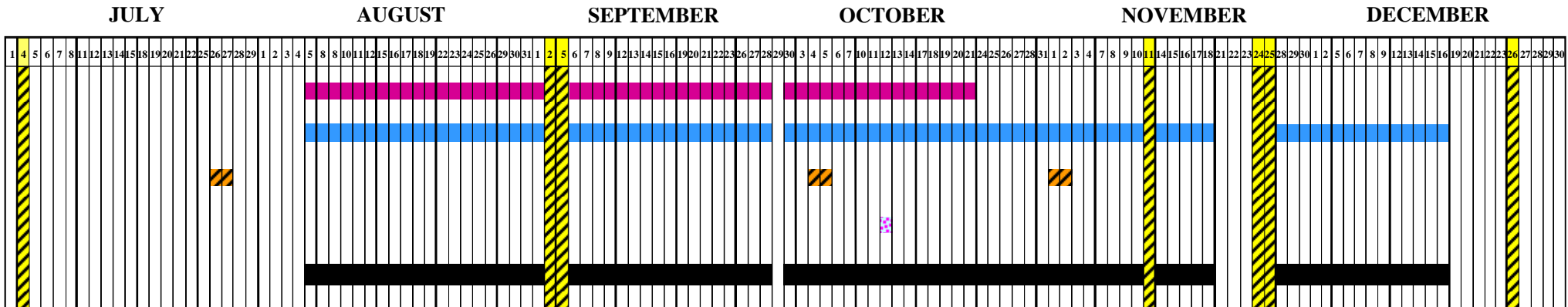
National / State / District Mandated Tests

- | | | | |
|---|---|--|--|
| <ul style="list-style-type: none"> Annual CA English Language Development Test (CELDT) Initial CA English Language Development Test (CELDT) CA High School Exit Examination (CAHSEE) | <ul style="list-style-type: none"> National Assessment of Educational Progress (NAEP) Advanced Placement Examinations (AP) CA Physical Fitness Test | <ul style="list-style-type: none"> PSAT Early Assessment Program (EAP) Writing | <ul style="list-style-type: none"> CA Standards Tests (CST), CA Alternate Performance Assessment (CAPA), CA Modified Assessment (CMA), & Standards-based Tests in Spanish (STS) Instructional Days |
|---|---|--|--|

LOS ANGELES UNIFIED SCHOOL DISTRICT

2011-2012 TESTING CALENDAR

SINGLE TRACK, Balanced Traditional Schools, Grades 9-12



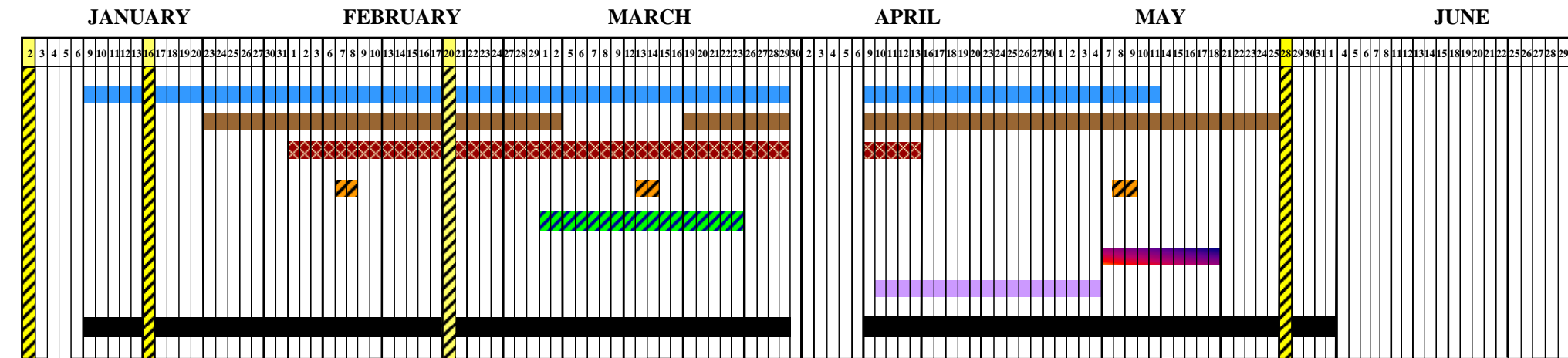
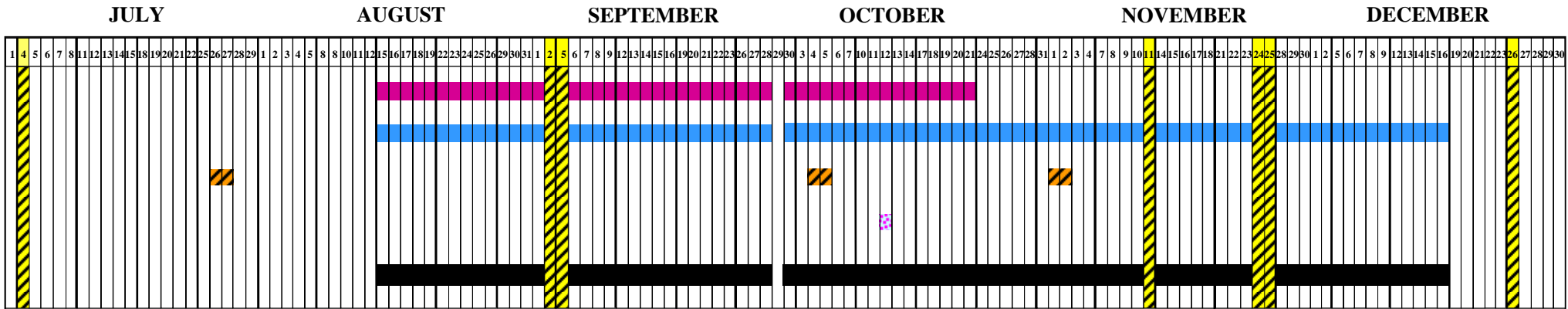
National / State / District Mandated Tests

Annual CA English Language Development Test (CELDT)	National Assessment of Educational Progress (NAEP)	PSAT	CA Standards Tests (CST), CA Alternate Performance Assessment (CAPA), CA Modified Assessment (CMA), & Standards-based Tests in Spanish (STS)
Initial CA English Language Development Test (CELDT)	CA Physical Fitness Test	Early Assessment Program (EAP) Writing	Instructional Days
CA High School Exit Examination (CAHSEE)	Advanced Placement Examinations (AP)		

LOS ANGELES UNIFIED SCHOOL DISTRICT

2011-2012 TESTING CALENDAR

SINGLE TRACK, Early Start Schools, Grades 9-12



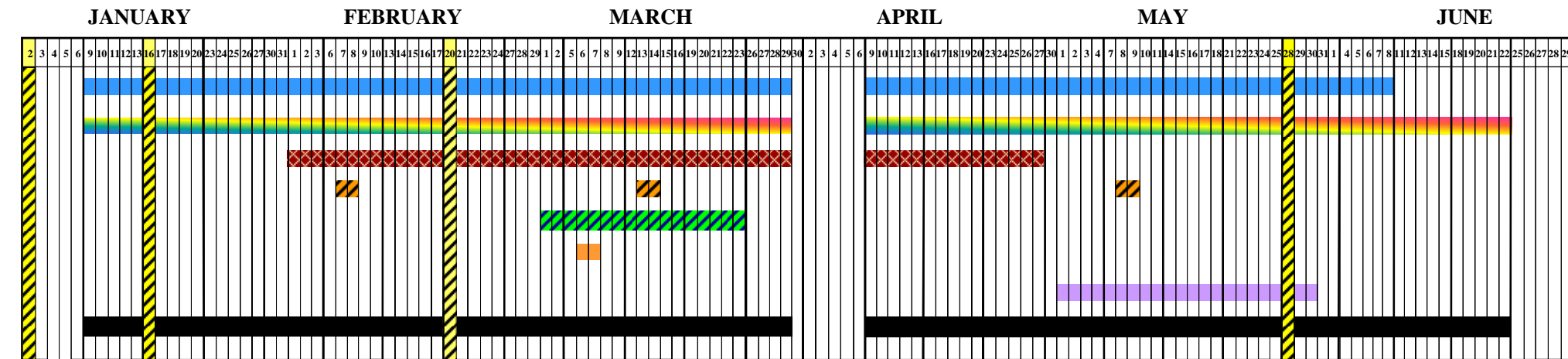
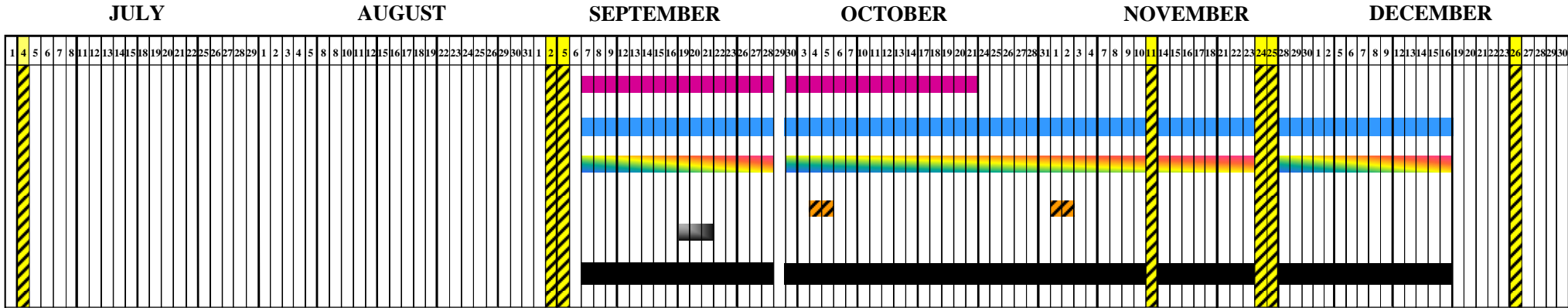
National / State / District Mandated Tests

- | | | | | |
|--|--|--|---|--------------------|
| Annual CA English Language Development Test (CELDT) | National Assessment of Educational Progress (NAEP) | PSAT | CA Standards Tests (CST),
CA Alternate Performance Assessment (CAPA),
CA Modified Assessment (CMA), &
Standards-based Tests in Spanish (STS) | Instructional Days |
| Initial CA English Language Development Test (CELDT) | CA Physical Fitness Test | Early Assessment Program (EAP) Writing | | |
| CA High School Exit Examination (CAHSEE) | Advanced Placement Examinations (AP) | | | |

LOS ANGELES UNIFIED SCHOOL DISTRICT

2011-2012 TESTING CALENDAR

SINGLE TRACK, Special Education Schools, Grades K-12



National / State / District Mandated Tests

- | | | | | |
|--|--------------------------------|--|---|--------------------|
| Annual CA English Language Development Test (CELDT) | CA Writing Assessment | Early Assessment Program (EAP) Writing | CA Standards Tests (CST),
CA Alternate Performance Assessment (CAPA),
CA Modified Assessment (CMA), &
Standards-based Tests in Spanish (STS) | Instructional Days |
| Initial CA English Language Development Test (CELDT) | CA Physical Fitness Test | CST/CMA Field Test | | |
| Kindergarten Checklist | Early Assessment Program (EAP) | | | |
| CA High School Exit Examination (CAHSEE) | | | | |

LOS ANGELES UNIFIED SCHOOL DISTRICT

2011-2012 TESTING CALENDAR

THREE TRACKS, Middle Schools, Grades 6-8



JULY

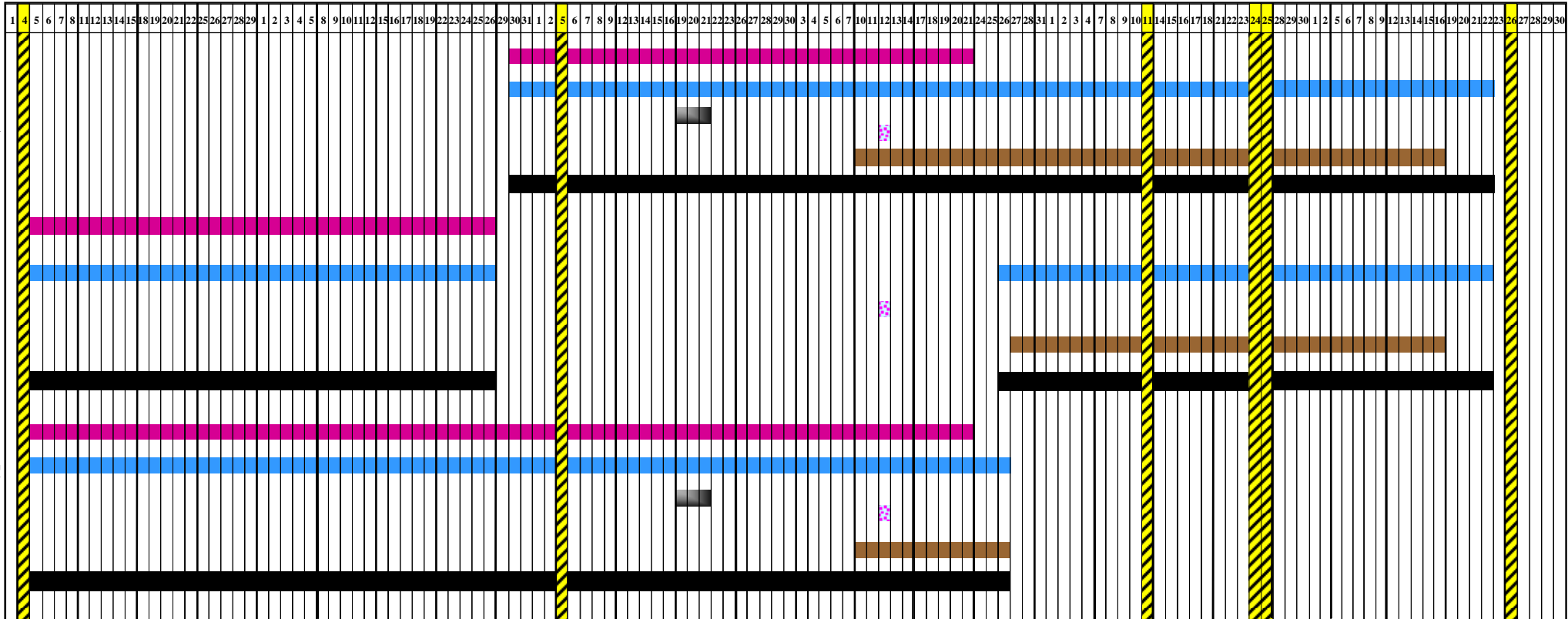
AUGUST

SEPTEMBER

OCTOBER

NOVEMBER

DECEMBER



National / State / District Mandated Tests

Annual CA English Language Development Test (CELDT)	CA Physical Fitness Test	CST/CMA Field Test	CA Standards Tests (CST), CA Alternate Performance Assessment (CAPA), CA Modified Assessment (CMA), & Standards-based Tests in Spanish (STS)	Instructional Days
Initial CA English Language Development Test (CELDT)	CA Writing Assessment	PSAT		
National Assessment of Educational Progress (NAEP)				

LOS ANGELES UNIFIED SCHOOL DISTRICT

2011-2012 TESTING CALENDAR

THREE TRACKS, Middle Schools, Grades 6-8



JANUARY

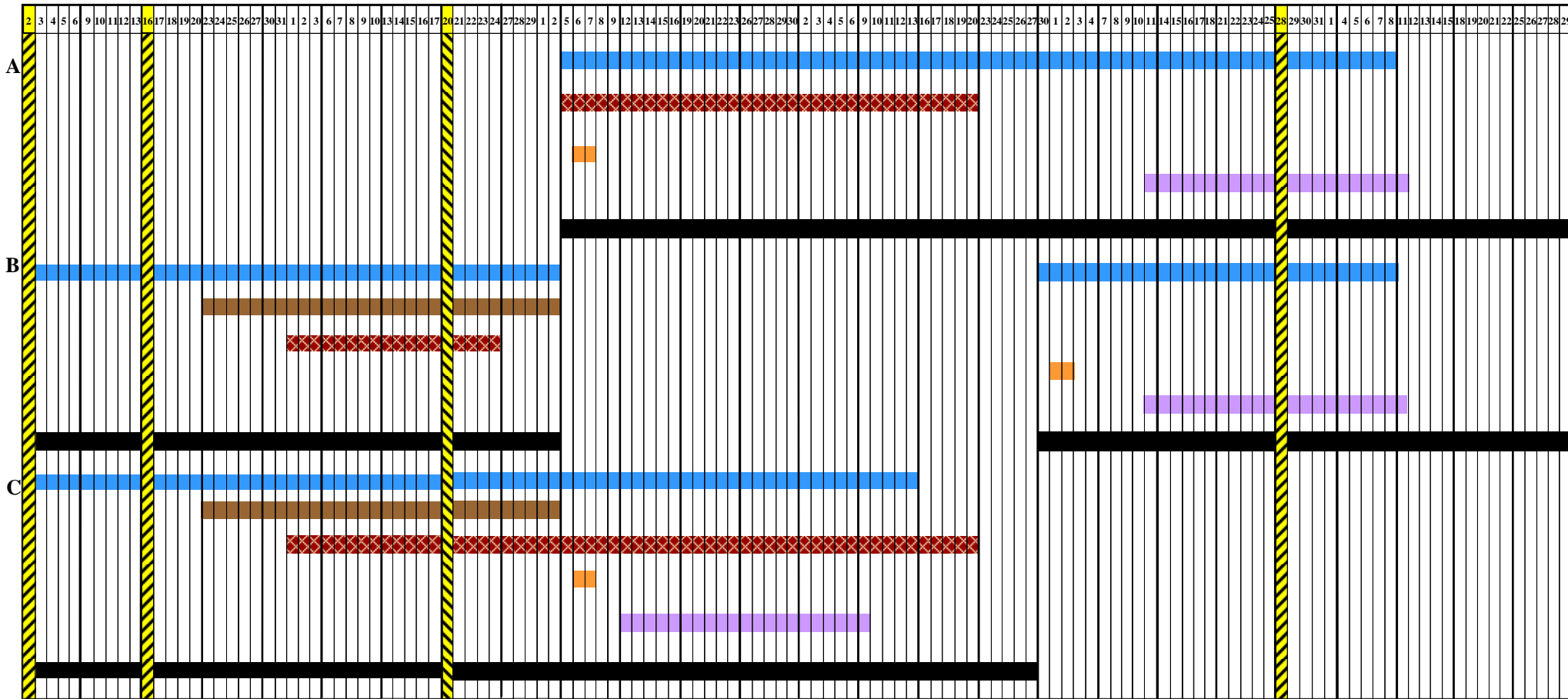
FEBRUARY

MARCH

APRIL

MAY

JUNE



National / State / District Mandated Tests

Annual CA English Language Development Test (CELDT)	CA Physical Fitness Test	CST/CMA Field Test	CA Standards Tests (CST), CA Alternate Performance Assessment (CAPA), CA Modified Assessment (CMA), & Standards-based Tests in Spanish (STS)	Instructional Days
Initial CA English Language Development Test (CELDT)	CA Writing Assessment	PSAT		
National Assessment of Educational Progress (NAEP)				

LOS ANGELES UNIFIED SCHOOL DISTRICT

2011-2012 TESTING CALENDAR

THREE TRACKS, High Schools, Grades 9-12



JULY

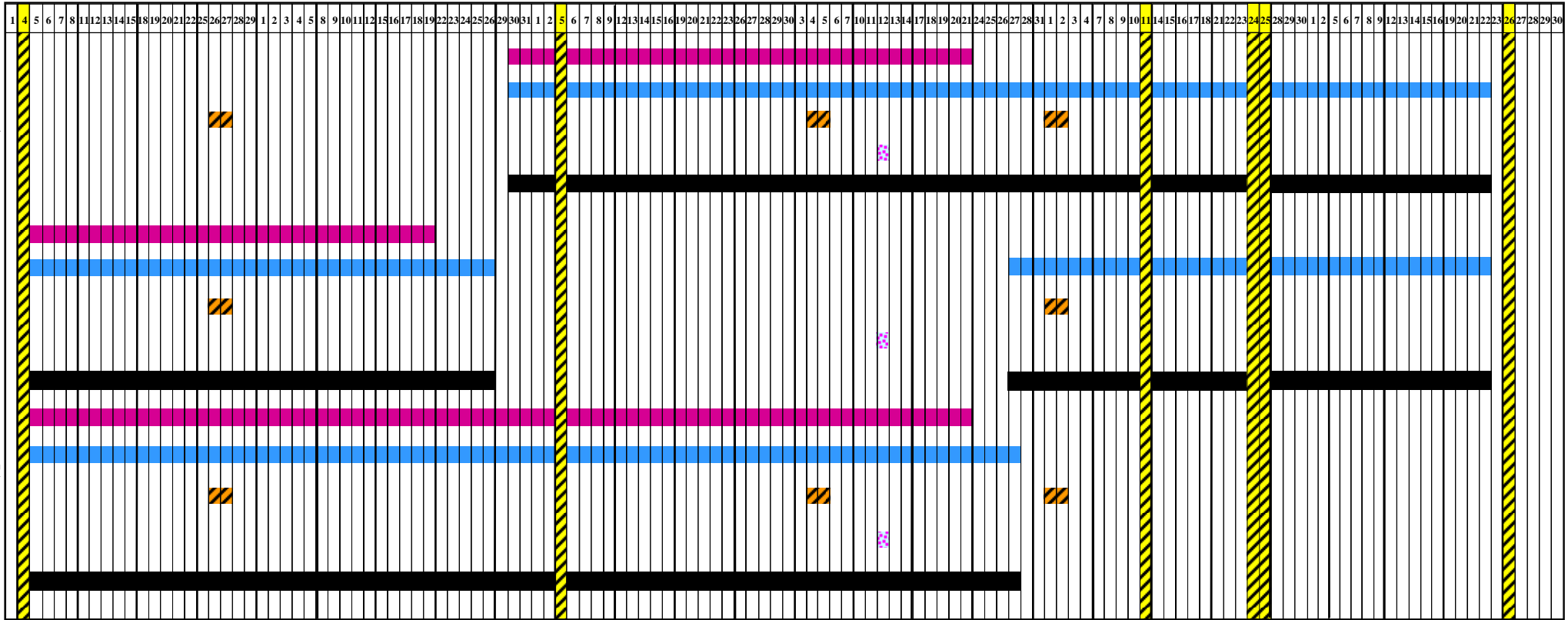
AUGUST

SEPTEMBER

OCTOBER

NOVEMBER

DECEMBER



National / State / District Mandated Tests

Annual CA English Language Development Test (CELDT)	National Assessment of Educational Progress (NAEP)	PSAT	CA Standards Tests (CST), CA Alternate Performance Assessment (CAPA), CA Modified Assessment (CMA), & Standards-based Tests in Spanish (STS)	Instructional Days
Initial CA English Language Development Test (CELDT)	Advanced Placement Examinations (AP)	Early Assessment Program (EAP) Writing		
CA High School Exit Examination (CAHSEE)	CA Physical Fitness Test			

LOS ANGELES UNIFIED SCHOOL DISTRICT

2011-2012 TESTING CALENDAR

THREE TRACKS, High Schools, Grades 9-12



JANUARY

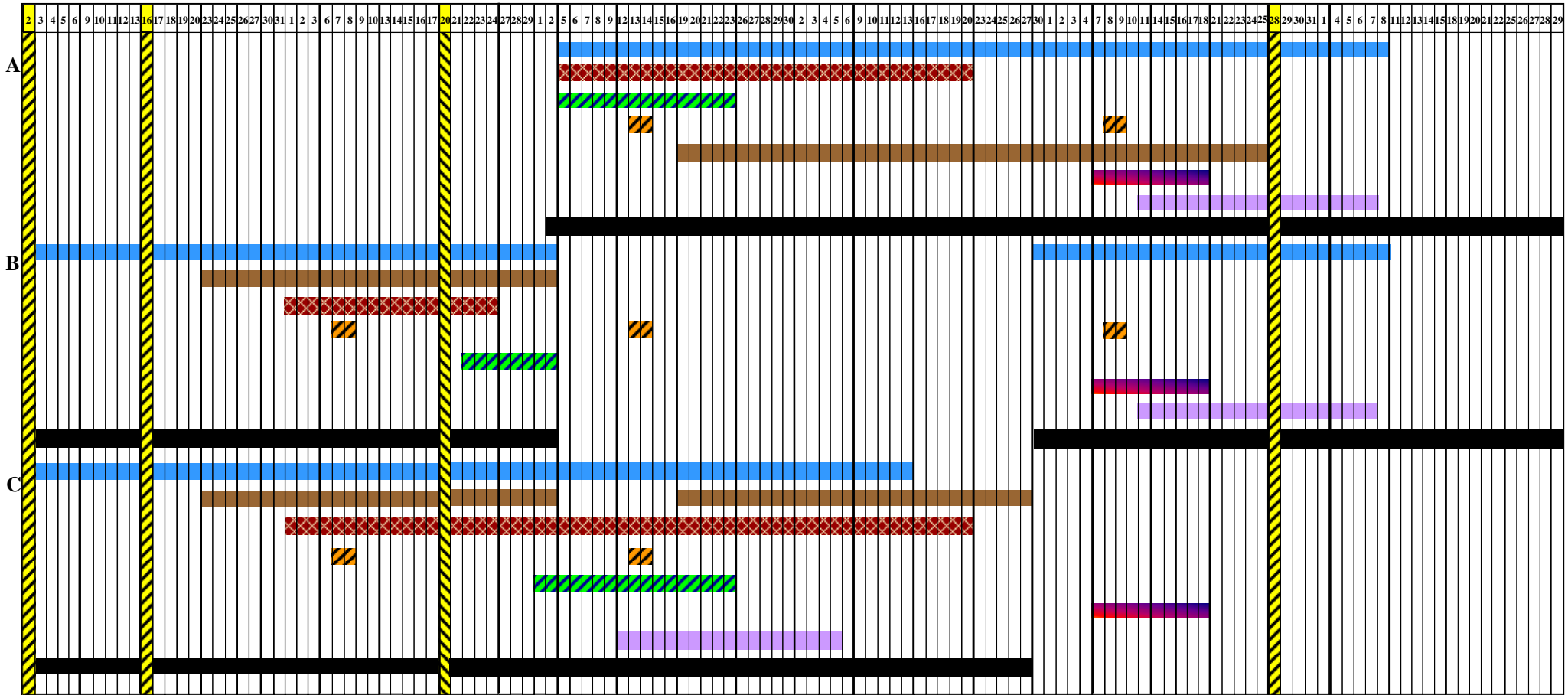
FEBRUARY

MARCH

APRIL

MAY

JUNE



National / State / District Mandated Tests

- | | | | |
|---|---|--|--|
| <ul style="list-style-type: none"> Annual CA English Language Development Test (CELDT) Initial CA English Language Development Test (CELDT) CA High School Exit Examination (CAHSEE) | <ul style="list-style-type: none"> National Assessment of Educational Progress (NAEP) Advanced Placement Examinations (AP) CA Physical Fitness Test | <ul style="list-style-type: none"> PSAT Early Assessment Program (EAP) Writing | <ul style="list-style-type: none"> CA Standards Tests (CST), CA Alternate Performance Assessment (CAPA), CA Modified Assessment (CMA), & Standards-based Tests in Spanish (STS) Instructional Days |
|---|---|--|--|

LOS ANGELES UNIFIED SCHOOL DISTRICT

2011-2012 TESTING CALENDAR

FOUR TRACKS, Elementary and Middle Schools, Grades K-8



JULY

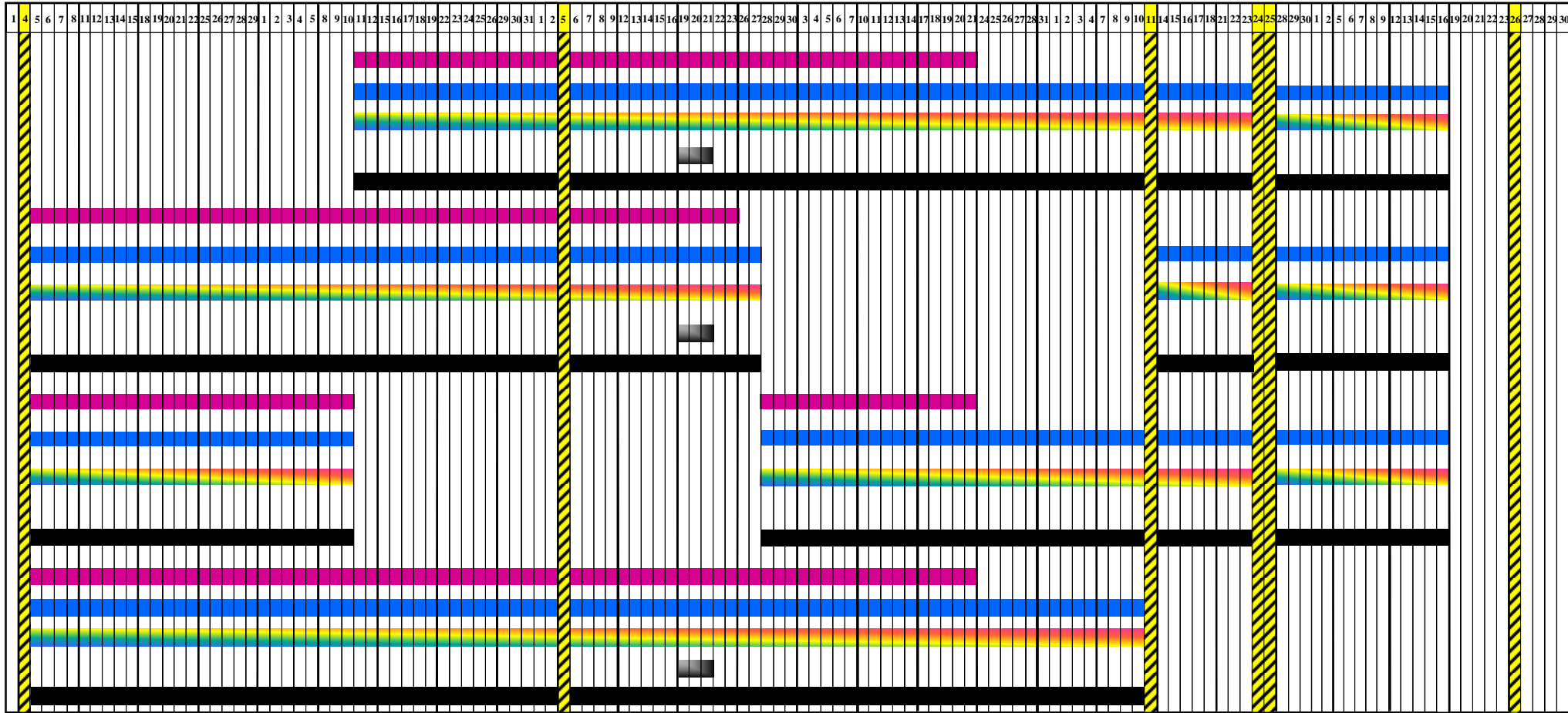
AUGUST

SEPTEMBER

OCTOBER

NOVEMBER

DECEMBER



National / State / District Mandated Tests

- Annual CA English Language Development Test (CELDT)
- Initial CA English Language Development Test (CELDT)
- Kindergarten Checklist
- National Assessment of Educational Progress (NAEP)
- CST/CMA Field Test
- CA Physical Fitness Test
- CA Standards Tests (CST), CA Alternate Performance Assessment (CAPA), CA Modified Assessment (CMA), & Standards-based Tests in Spanish (STS)
- Instructional Days

LOS ANGELES UNIFIED SCHOOL DISTRICT 2011-2012 TESTING CALENDAR FOUR TRACKS, Elementary and Middle Schools, Grades K-8



JANUARY

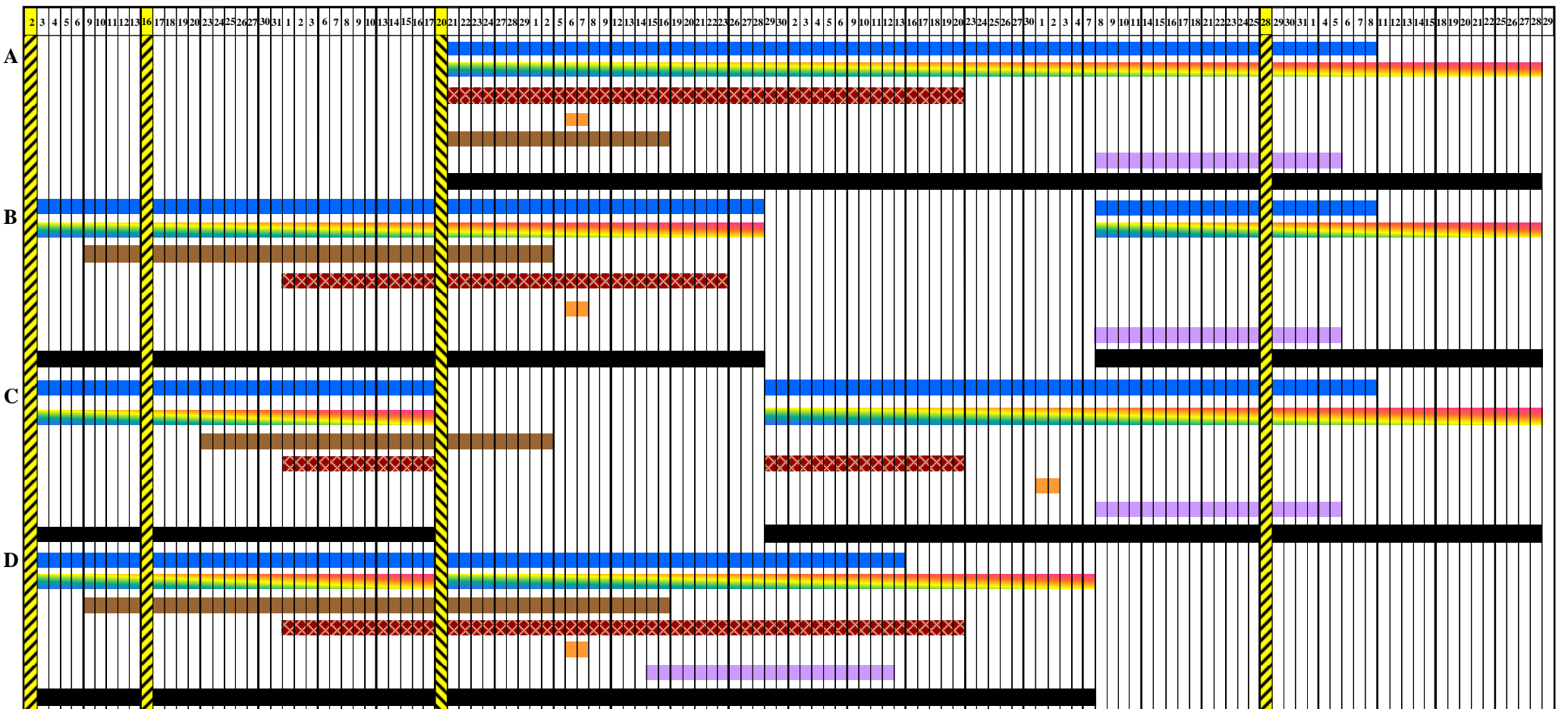
FEBRUARY

MARCH

APRIL

MAY

JUNE



National / State / District Mandated Tests

- | | | | | |
|--|--|-----------------------|---|--------------------|
| Annual CA English Language Development Test (CELDT) | National Assessment of Educational Progress (NAEP) | CST/CMA Field Test | CA Standards Tests (CST),
CA Alternate Performance Assessment (CAPA),
CA Modified Assessment (CMA), &
Standards-based Tests in Spanish (STS) | Instructional Days |
| Initial CA English Language Development Test (CELDT) | CA Physical Fitness Test | CA Writing Assessment | | |
| Kindergarten Checklist | | | | |