

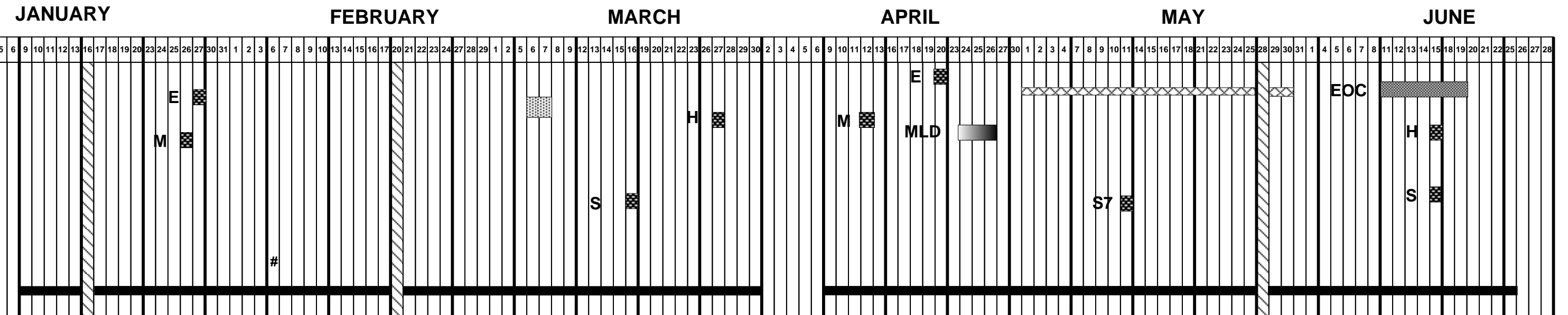
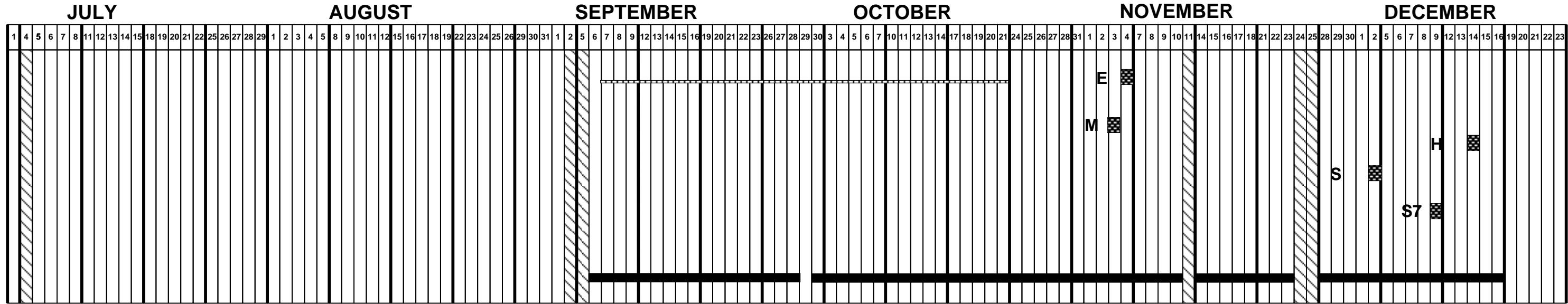


LOS ANGELES UNIFIED SCHOOL DISTRICT
2011-2012 Comprehensive Assessment Program Schedule
Single Track Middle Schools, Grades 6-8

DRAFT

HOLIDAY

Assessments should be administered no later than the End Date identified below



Instructional Days # = Second Semester Begins
 CST/CAPA Annual CELDT
 Grade 7 Writing Component

= End Date for Assessment EOC = Algebra or Geometry End of Course Examination
H = History/Social Science S7 = Science 7 S = Science 6, 8
E = English/Language Arts M = Mathematics
 MLD = 8th MATH/LITERACY DIAGNOSTIC



HOLIDAY

**2011-2012 Comprehensive Assessment Program Schedule
Three Track Middle Schools, Grades 6-8**

DRAFT

Attachment A

Assessments should be administered no later than the End Date identified below

JANUARY

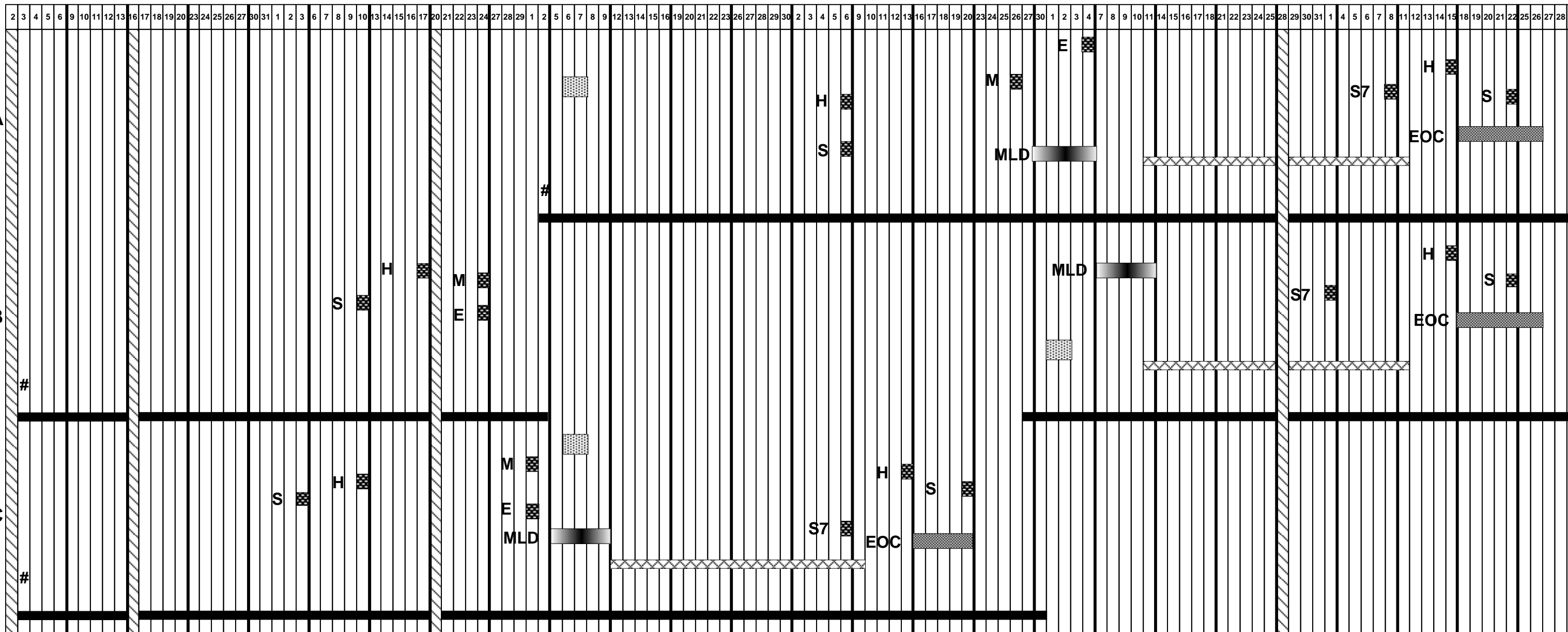
FEBRUARY

MARCH

APRIL

MAY

JUNE



Instructional Days CST/CAPA
 # = Second Semester Begins
 Grade 7 Writing Component

= End Date for Assessment M = Mathematics S = Science 6, 8
 E = English/Language Arts H = History/Social Science S7 = Science 7
 MLD = 8th Math/Literacy Diagnostic
 EOC = Algebra and Geometry End of Course Examination



LOS ANGELES UNIFIED SCHOOL DISTRICT

2011-2012 Comprehensive Assessment Program Schedule
Four Track Middle Schools, Grades 6-8

DRAFT

Attachment A

Assessments should be administered no later than the End Date identified below

	JULY																															AUGUST																															SEPTEMBER																															OCTOBER																															NOVEMBER																															DECEMBER																														
	1	4	5	6	7	8	11	12	13	14	15	18	19	20	21	22	25	26	27	28	29	1	2	3	4	5	8	9	10	11	12	15	16	17	18	19	22	23	24	25	26	29	30	31	1	2	5	6	7	8	9	12	13	14	15	16	19	20	21	22	23	26	27	28	29	30	3	4	5	6	7	10	11	12	13	14	17	18	19	20	21	24	25	26	27	28	31	1	2	3	4	7	8	9	10	11	14	15	16	17	18	21	22	23	24	25	28	29	30	1	2	5	6	7	8	9	12	13	14	15	16	19	20	21	22	23																																																												
A	[HOLIDAY]																															[HOLIDAY]																															[HOLIDAY]																															[HOLIDAY]																															[HOLIDAY]																															[HOLIDAY]																														
B	[HOLIDAY]																															[HOLIDAY]																															[HOLIDAY]																															[HOLIDAY]																															[HOLIDAY]																															[HOLIDAY]																														
C	[HOLIDAY]																															[HOLIDAY]																															[HOLIDAY]																															[HOLIDAY]																															[HOLIDAY]																															[HOLIDAY]																														
D	[HOLIDAY]																															[HOLIDAY]																															[HOLIDAY]																															[HOLIDAY]																															[HOLIDAY]																															[HOLIDAY]																														

Instructional Days
 Annual CELDT

= End Date for Assessment M = Mathematics
 E = English/Language Arts S = Science 6, 8
 H = History/Social Science S7 = Science 7



HOLIDAY

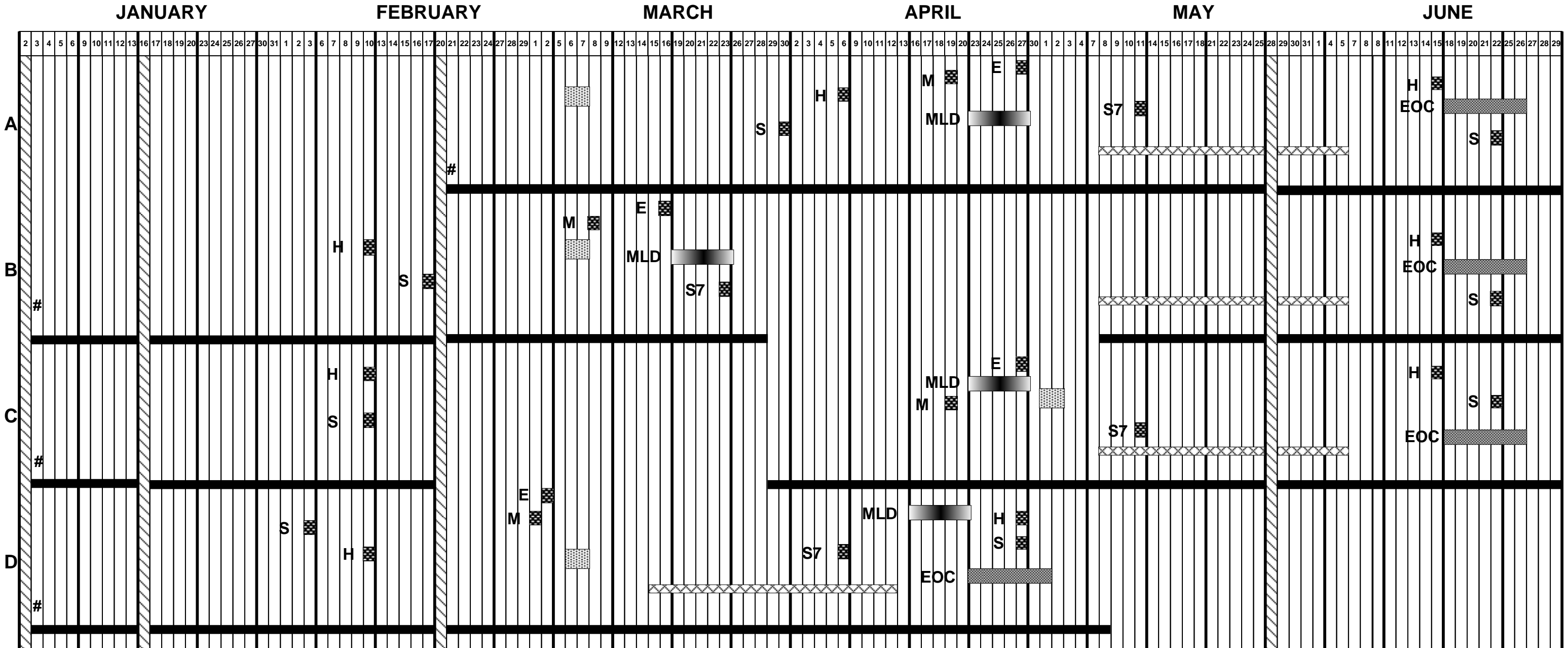
LOS ANGELES UNIFIED SCHOOL DISTRICT

2011-2012 Comprehensive Assessment Program Schedule Four Track Middle Schools, Grades 6-8

DRAFT

Attachment A

Assessments should be administered no later than the End Date identified below



Instructional Days
 CST/CAPA
 # = Second Semester Begins
 Grade 7 Writing Component

= End Date for Assessment M = Mathematics S = Science 6, 8
 E = English/Language Arts H = History/Social Science S7 = Science 7
 EOC = Algebra and Geometry End of Course Examination
 MLD = 8th MATH/LITERACY DIAGNOSTIC