



Sent Via E-Mail Only: psc@lausd.net

16 November 2009

Superintendent Ramon Cortines  
Los Angeles Unified School District  
333 S. Beaudry Avenue  
Los Angeles, California 90017

Re Letter of Intent for Central Region ES # 13

Dear Superintendent Cortines,

I want to sincerely thank you for the opportunity to participate in the Public School Choice process. I submit my letter of intent today with cautious optimism: optimism because I believe this process has the opportunity to truly empower our communities to choose a school model that will yield significant academic achievement for our students in the near future; caution because my understanding of the currently proposed requirements for participating school operators would make it difficult for our organization to replicate the successful school model that we have worked so profoundly to develop.

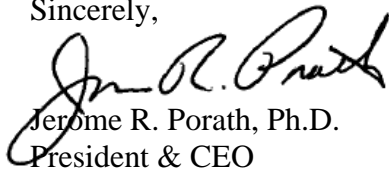
My specific concerns include the following:

- The process must be designed to provide school operators with the necessary autonomy and control over on-campus service delivery that will enable us to make site-level decisions in the best interests of our students. Broadly requiring the use of district-provided services constrains our ability to make such decisions and misses an opportunity to move toward reform by giving the district the impetus to greatly improve its own service delivery models.
- Similarly, school operators must have the flexibility to make programmatic determinations that have proven successful in our existing schools. As examples, we need to have the ability to use and rely upon the data systems that we have come to know and trust. We urge you not to layer on additional requirements for the sake of uniformity or administrative convenience at the expense of the “charter like” flexibility that has enabled us to succeed.
- Thirdly, the process must fully empower parents to make active choices on behalf of their own students. We request your leadership in implementing this process such that adult politics do not get in the way of good decisions for students. The process should position parents with the objective information to help them make well-informed decisions on

behalf of their children, and should enable the RFP reviewers to select the best program, regardless of politics. Opponents to this process have spread mis-information and untruths in our local Los Angeles communities that have done a dis-service to families and this process. Although you do not have control over these sources, we request that you continue to act swiftly and firmly to denounce all such efforts, and that you focus on the best choices for parents and students.

Again, we thank you for creating this truly phenomenal opportunity to develop systemic change for the students of Los Angeles. We wholeheartedly support you in recognizing that the status quo is unacceptable and that change must be both urgent and thoughtful. It is clear, however, that in order for this opportunity to play out effectively, the process must look different than the process that is currently proposed. In order for us to feel confident in submitting a proposal on January 11<sup>th</sup>, my concerns listed above must first be addressed. Please accept this letter of intent and the commitment to work with you to refine the process in the coming weeks to provide the programmatic autonomy and flexibility that has led to our success to date. Please let me know if you have questions.

Sincerely,



Jerome R. Porath, Ph.D.  
President & CEO

## Letter of Intent

This Letter of Intent will provide formal notice to LAUSD regarding an applicant's intention to submit a proposal for the 2010-2011 school year. The information presented therein is non-binding; specific details provided below may be finalized in the proposal submission.

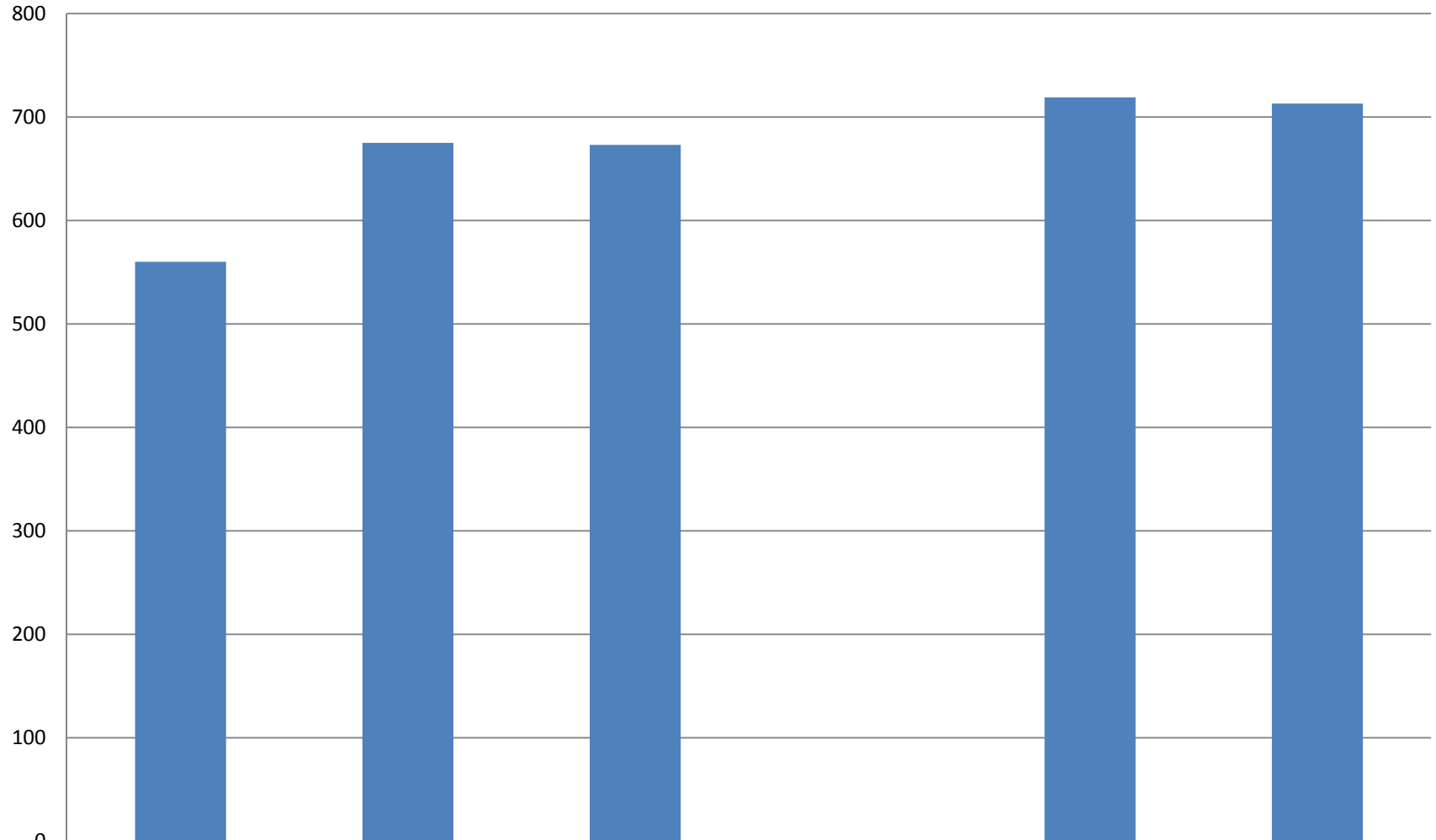
Applicants must submit this Letter of Intent and the following data where applicable: CST, API, AYP, EL reclassification, CAHSEE, SAT and AP no later than 5 p.m. on November 16, 2009. If you should have any questions about any of the requirements listed in this Letter of Intent, please contact LAUSD at (213) 241-7000. Letters of Intent must be submitted via [superintendent@lausd.net](mailto:superintendent@lausd.net)

Organization Information	
Name of applicant (for profit entities may not apply)	Value Schools
Address	950 W. Washington Boulevard Los Angeles, California 90015
Phone	213-748-8041
Website (if applicable)	Valueschools.com
Main contact name and phone number	Jerome Porath 213-471-4686 ext 224
Basic Proposed School Information and Description	
Proposed neighborhood school/site name (must agree to serve all students in that community)	We propose to offer an K-8 educational program at Central Region ES # 13 to alleviate the over-crowding at Pio Pico Elementary (a K-8 school)
Brief description of community engagement activities planned or completed	Value Schools plans to meet with parent, faculty and staff at Pio Pico Elementary to determine their needs and wishes. We will also hold public meetings for others in the neighborhood to offer advice and comments. We will do this early December 2009.
Brief description of proposed vision, mission, education plan, and	Value Schools has successfully implemented a researched based program for K-8 grade level

partnerships

students at Downtown Value School. This method has at its center a set of core values that provides an extra social capital to propel the learning process (the findings of the research). The program is academically focused and expects high achievement from all students. We expect a partnership with Pio Pico Elementary and other neighborhood organizations.

# Downtown Value School Academic Performance Index 2004-2009



■ DVS API

2004

560

2005

675

2006

673

2007

0

2008

719

2009

713

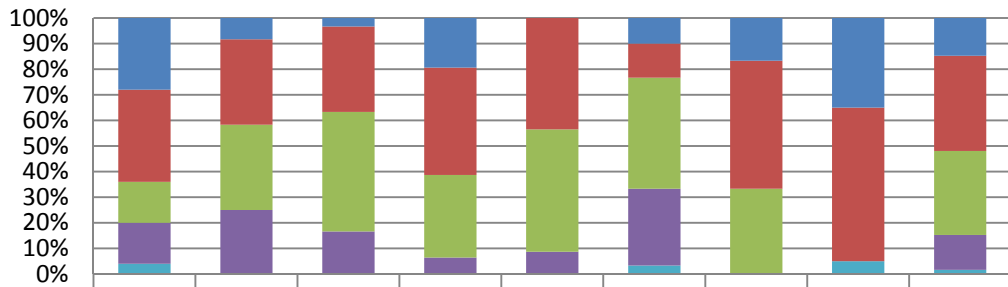
Downtown Value School  
Annual Yearly Progress (AYP)

	Met AYP	ELA Participation	ELA Proficiency	Math Participation	Math Proficiency	Met API	Program Improvement
2005	Yes	Yes	Yes	Yes	Yes	Yes	Not in PI
2006	No	Yes	No	Yes	Yes	Yes	Not in PI
2007	No	Yes	Yes	Yes	Yes	No	Not in PI
2008	No	Yes	No	Yes	Yes	Yes	Not in PI
2009	No	Yes	No	Yes	No	Yes	Year 1

Downtown Value School  
English Language Learners

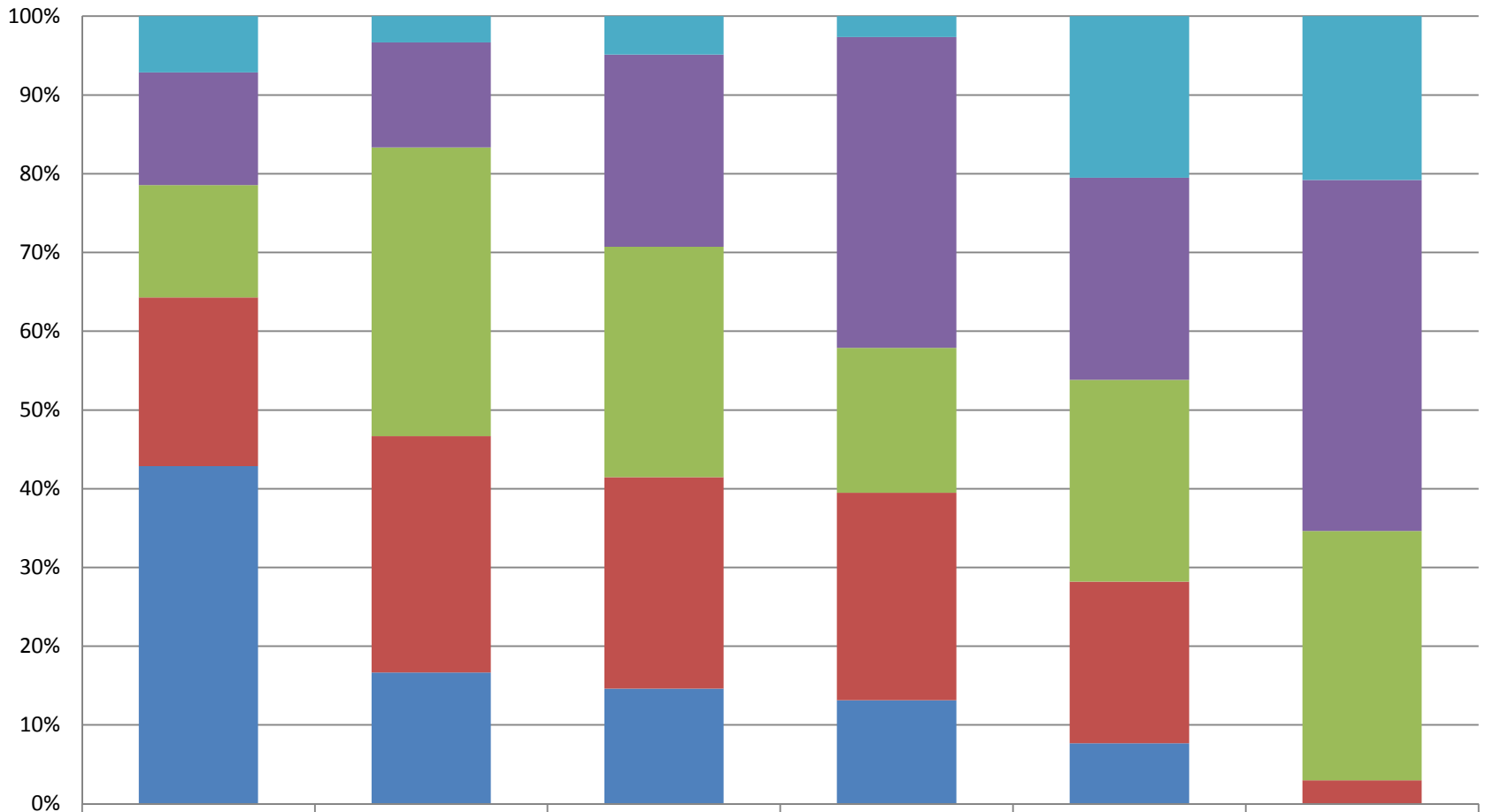
	Enrollment	% English Language Learners	% Fluent English Proficient	% Redesignated English Language Proficient
2008-09	420	36.0%	59.3%	86.5%
2007-08	411	54.3%	36.7%	17.4%
2006-07	384	71.6%	31.2%	26.7%

**Downtown Value School  
CELDT Testing  
2008-09**



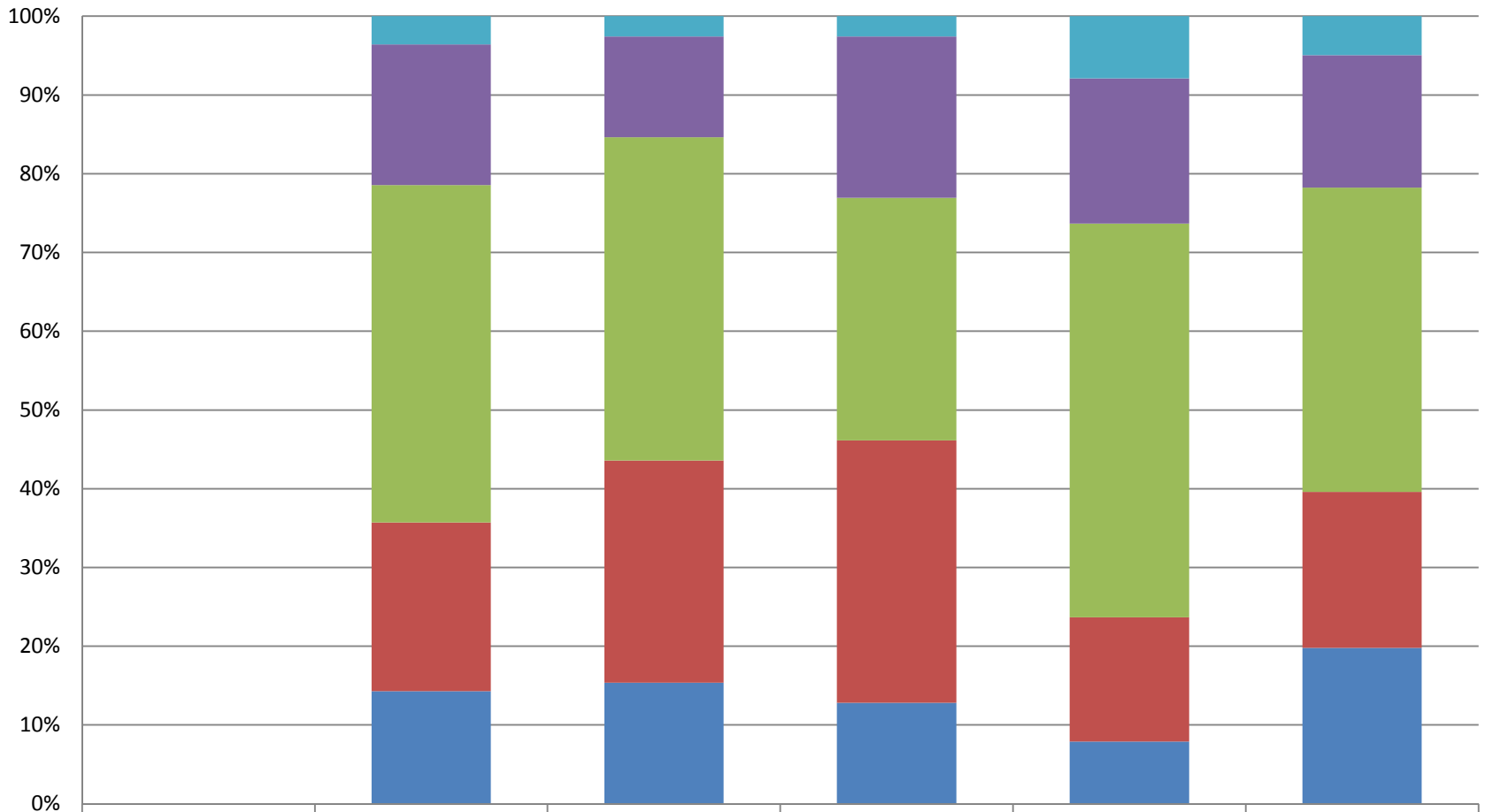
	Grade 1	Grade 2	Grade 3	Grade 4	Grade 5	Grade 6	Grade 7	Grade 8	Total
Advanced	7	1	1	6	0	3	2	7	27
Early Advanced	9	4	10	13	10	4	6	12	68
Intermediate	4	4	14	10	11	13	4	0	60
Early Intermediate	4	3	5	2	2	9	0	0	25
Beginning	1	0	0	0	0	1	0	1	3

## Downtown Value School Grade 2 Language Arts



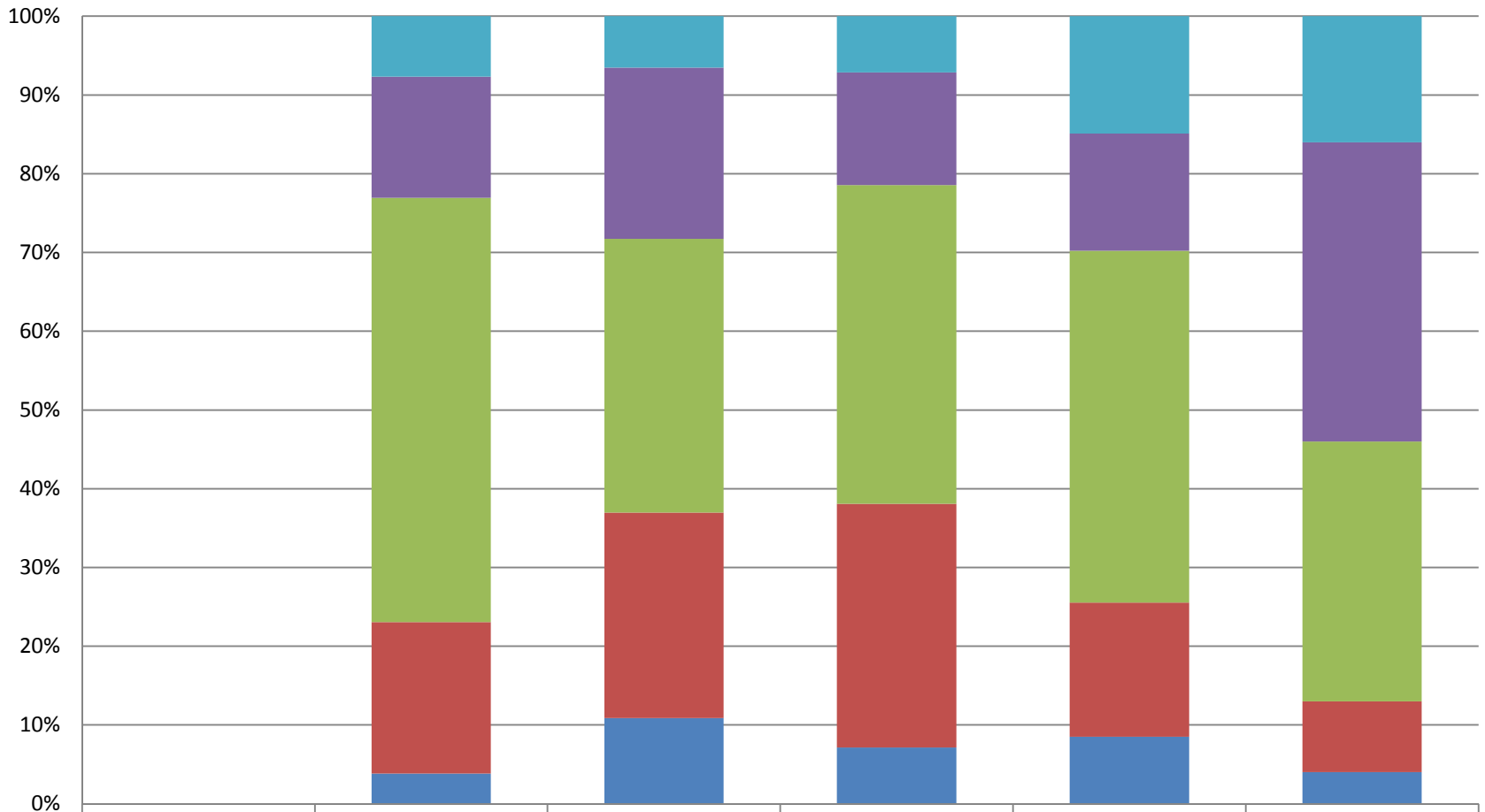
	2004	2005	2006	2007	2008	2009
Advanced	1	1	2	1	8	8
Proficient	2	4	10	15	10	17
Basic	2	11	12	7	10	12
Below Basic	3	9	11	10	8	1
Far Below	6	5	6	5	3	0

## Downtown Value School Grade 3 Language Arts



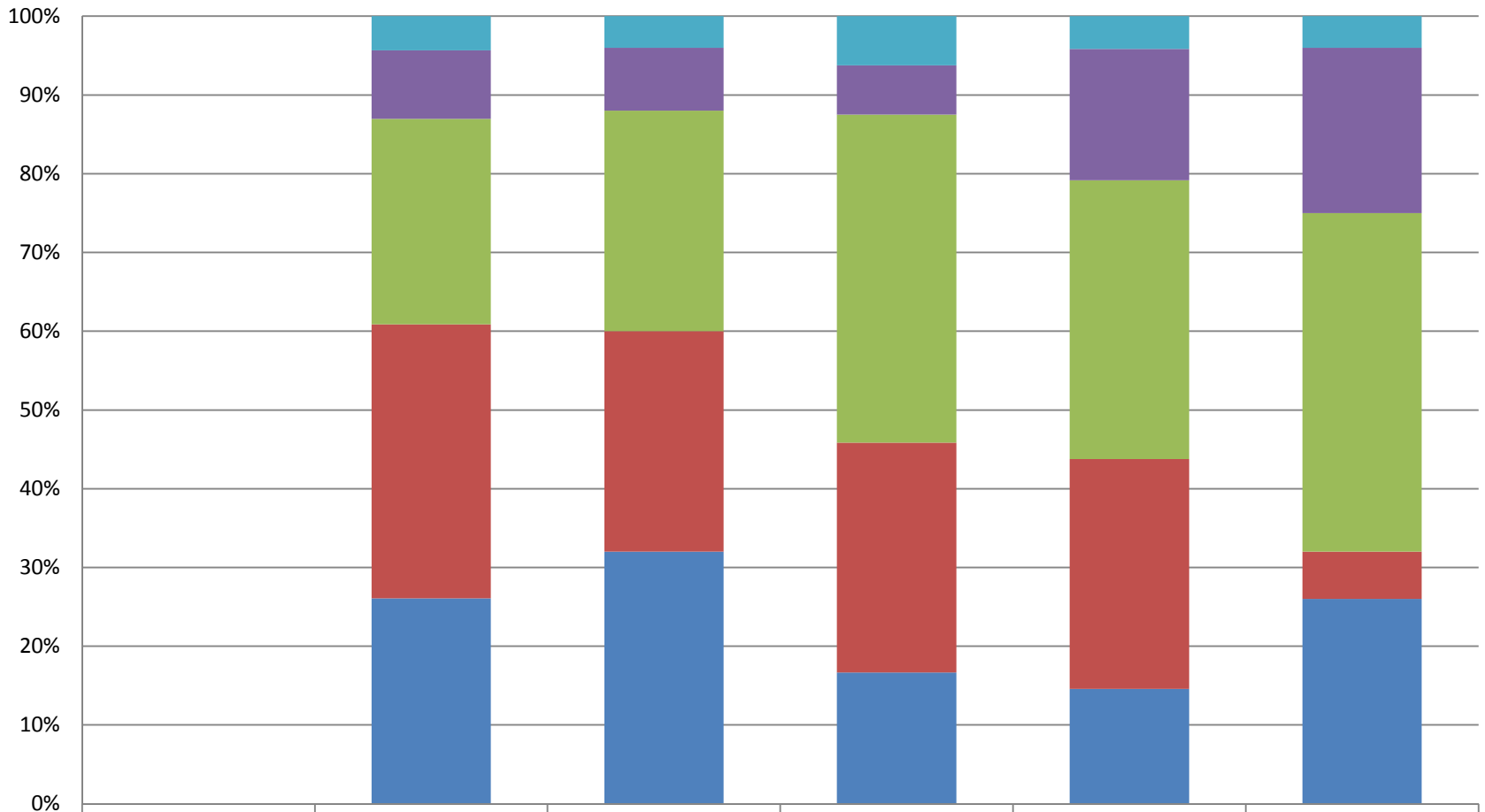
	2004	2005	2006	2007	2008	2009
Advanced	0	1	1	1	3	2
Proficient	0	5	5	8	7	7
Basic	0	12	16	12	19	16
Below Basic	0	6	11	13	6	8
Far Below	0	4	6	5	3	8

## Downtown Value School Grade 4 Language Arts



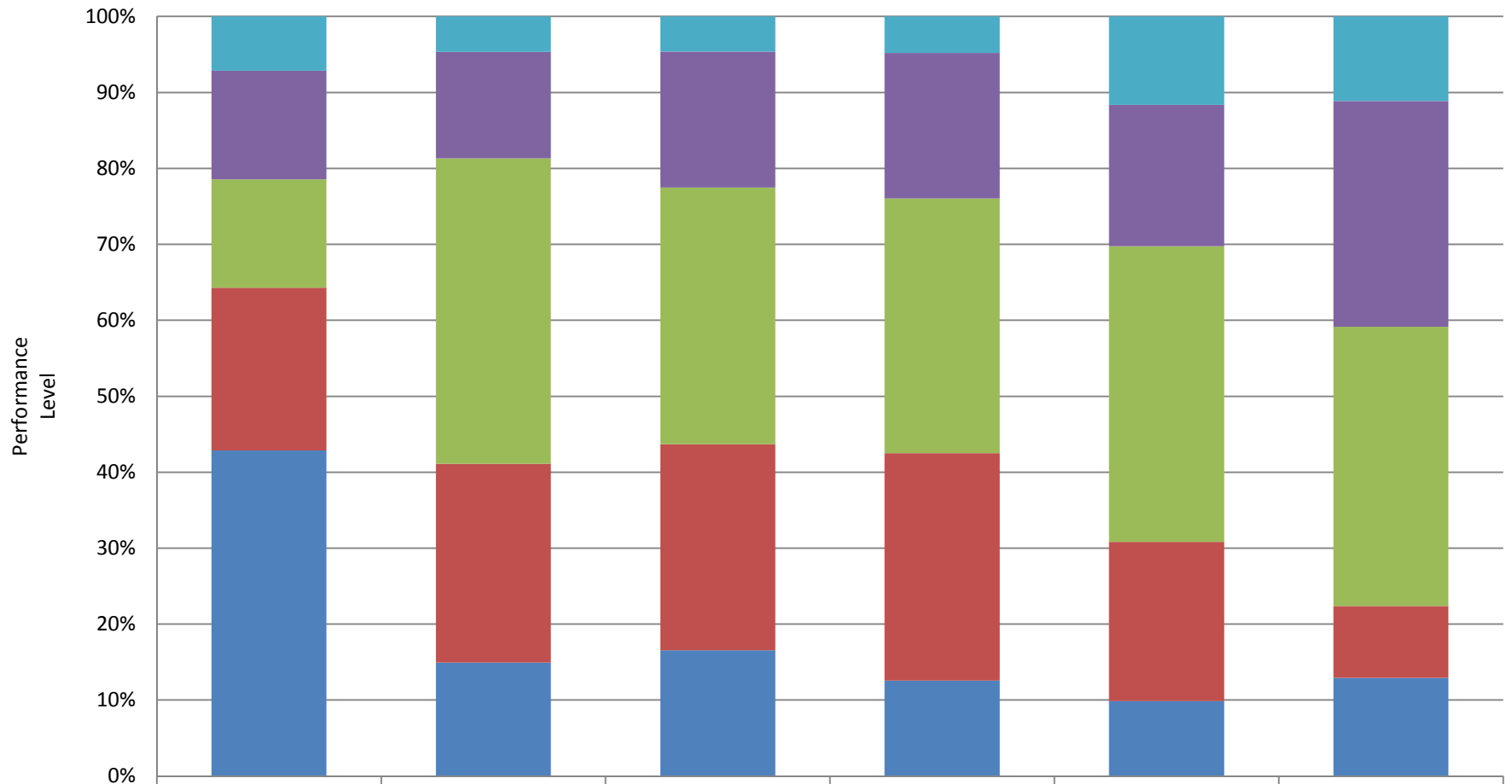
	2004	2005	2006	2007	2008	2009
Advanced	0	2	3	3	7	7
Proficient	0	4	10	6	7	17
Basic	0	14	16	17	21	15
Below Basic	0	5	12	13	8	4
Far Below	0	1	5	3	4	2

## Downtown Value School Grade 5 Language Arts



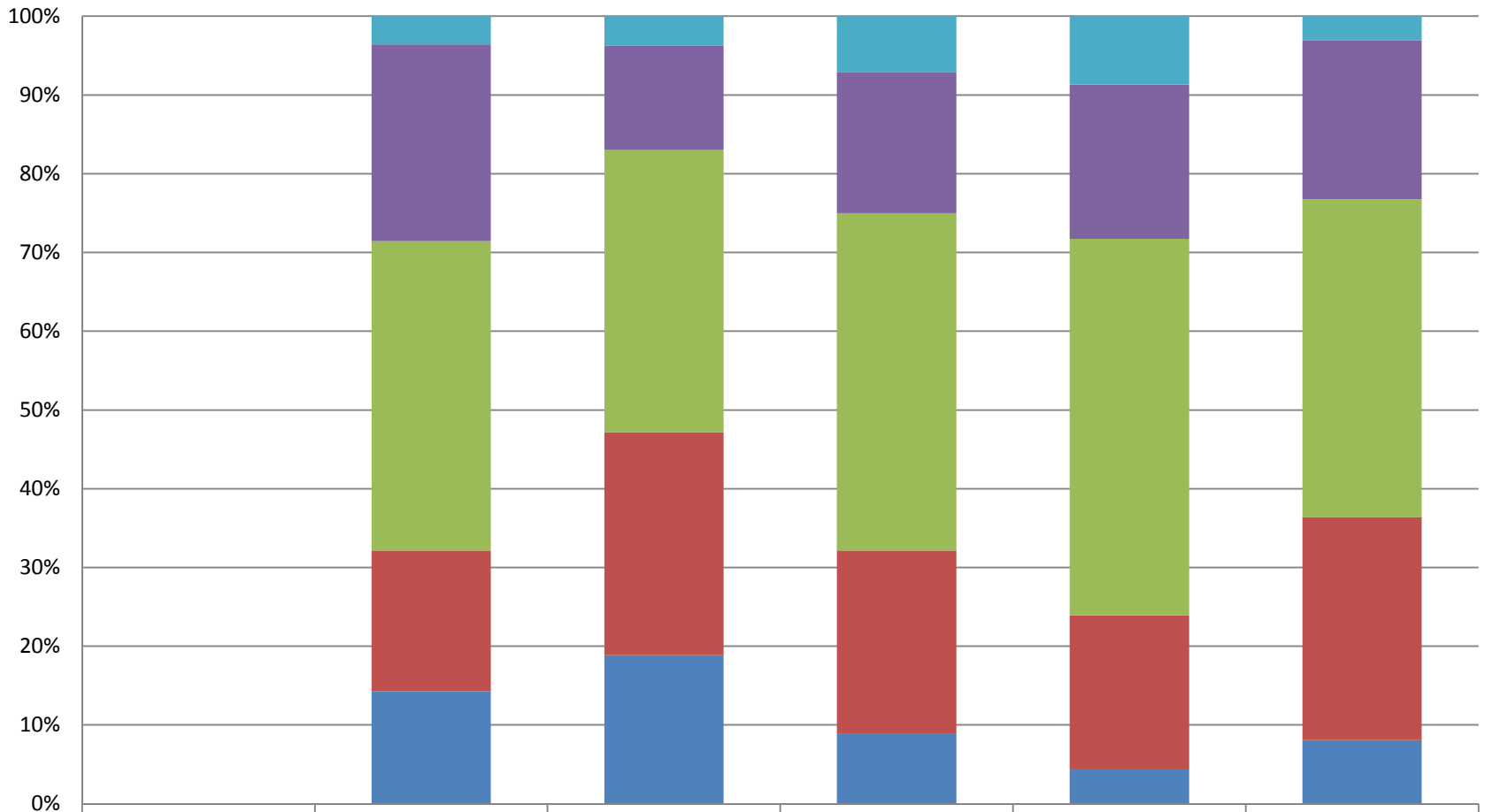
	2004	2005	2006	2007	2008	2009
Advanced	0	1	1	3	2	2
Proficient	0	2	2	3	8	10
Basic	0	6	7	20	17	20
Below Basic	0	8	7	14	14	3
Far Below	0	6	8	8	7	12

### Downtown Value School Grades 2-5 Language Arts



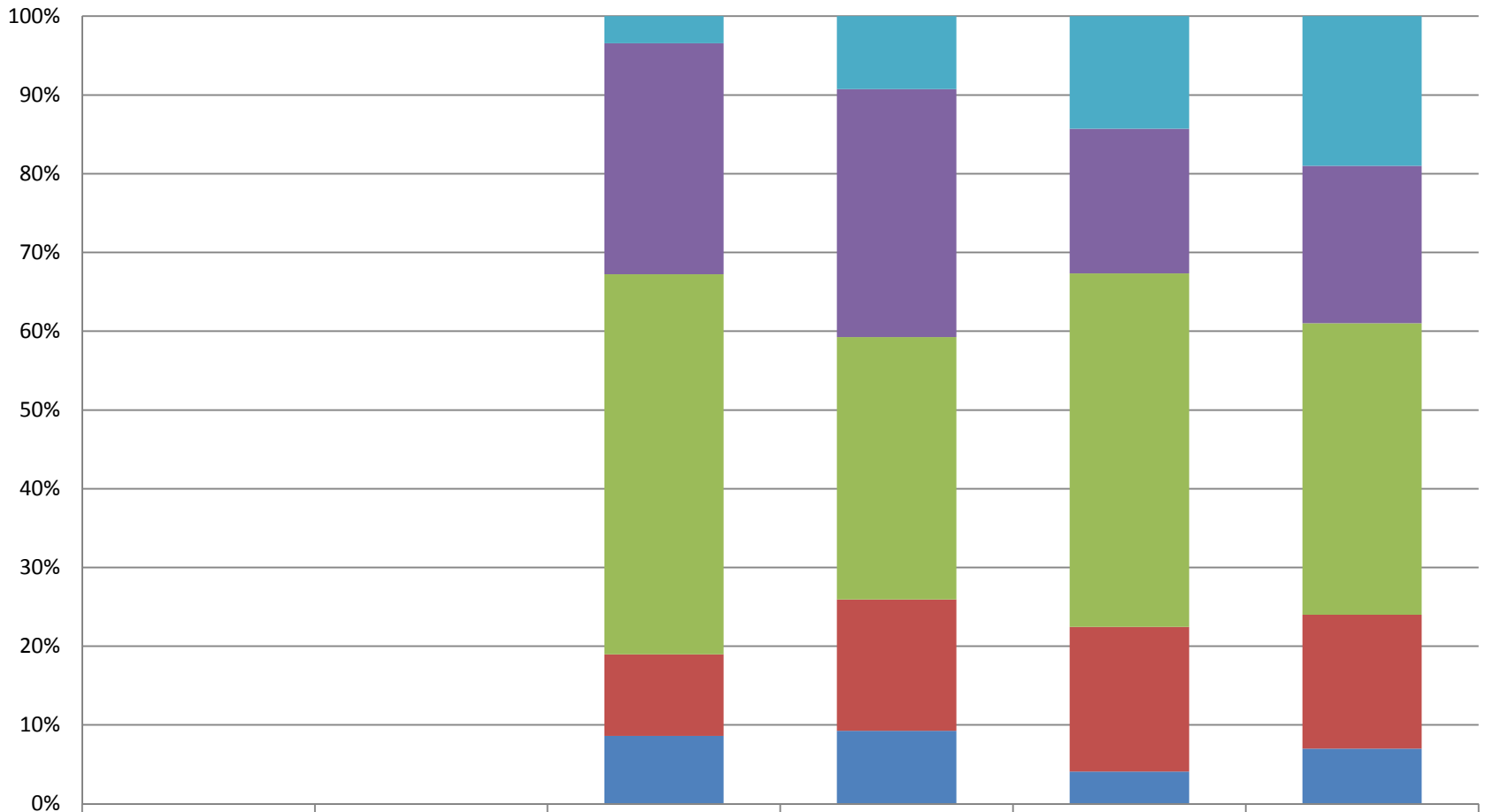
	2004	2005	2006	2007	2008	2009
Advanced	1	5	7	8	20	19
Proficient	2	15	27	32	32	51
Basic	2	43	51	56	67	63
Below Basic	3	28	41	50	36	16
Far Below	6	16	25	21	17	22

## Downtown Value School Grade 6 Language Arts



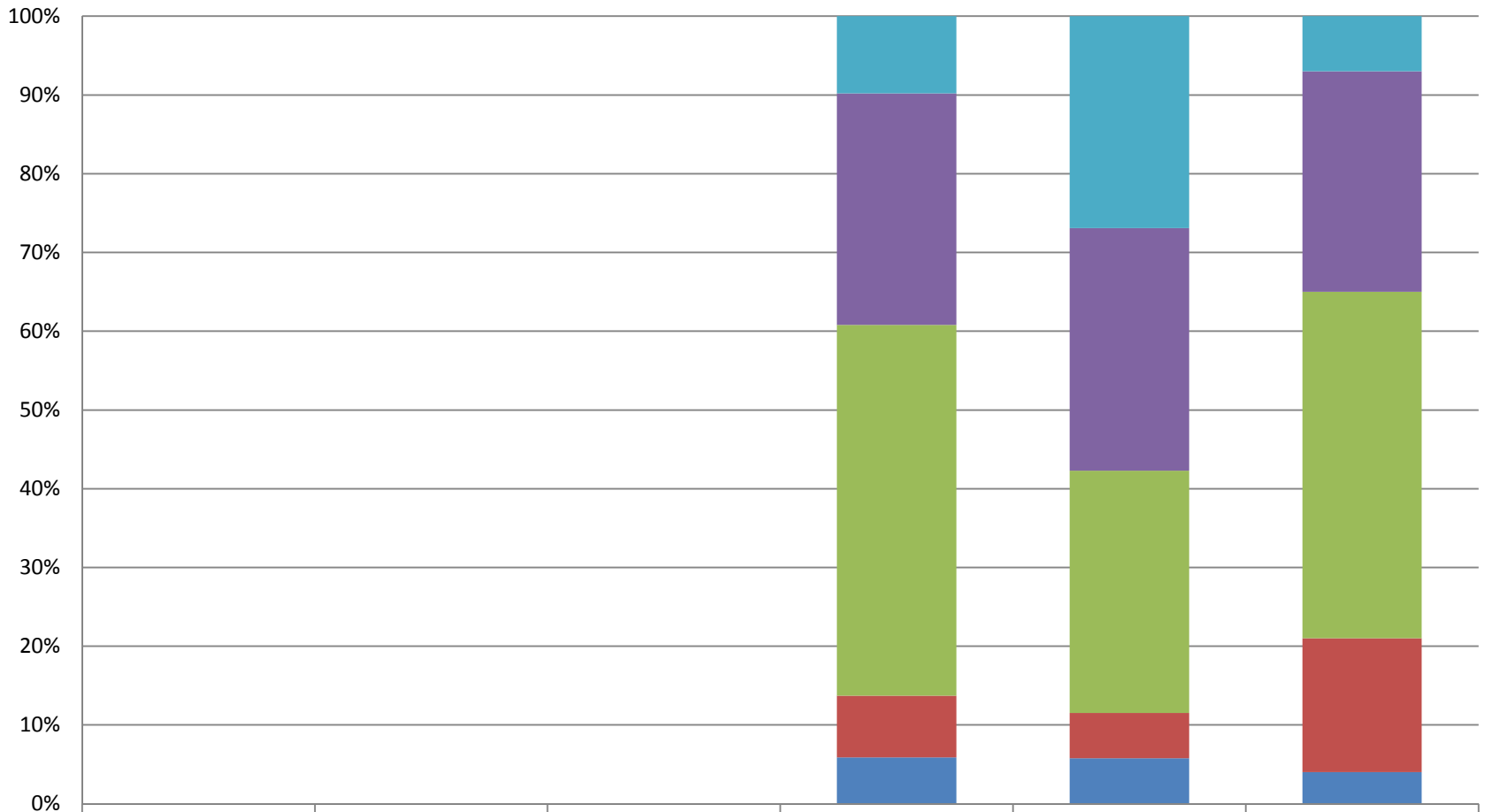
	2004	2005	2006	2007	2008	2009
Advanced	0	2	2	4	4	2
Proficient	0	14	7	10	9	12
Basic	0	22	19	24	22	24
Below Basic	0	10	15	13	9	17
Far Below	0	8	10	5	2	5

## Downtown Value School Grade 7 Language Arts



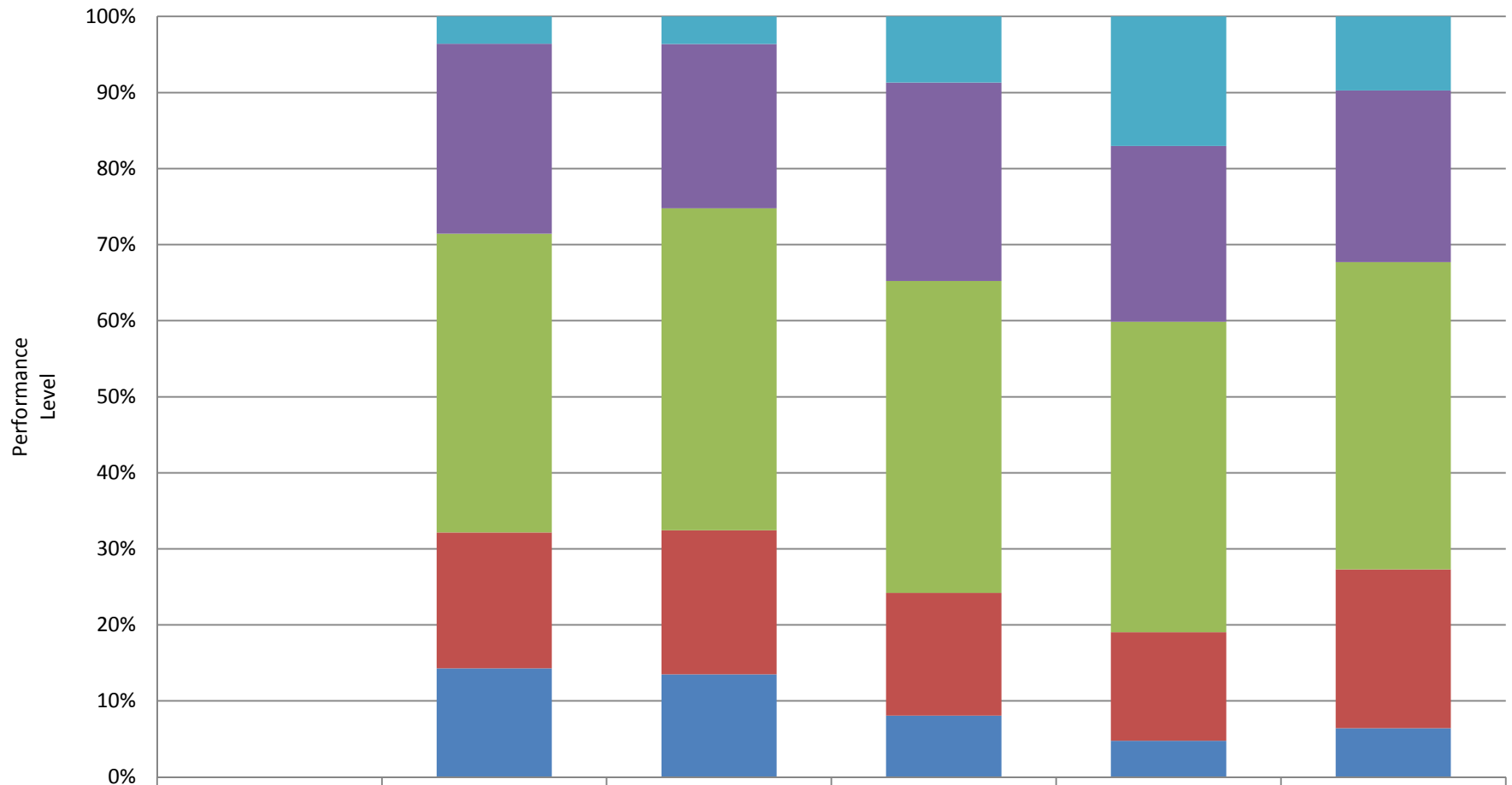
	2004	2005	2006	2007	2008	2009
Advanced	0	0	2	5	7	11
Proficient	0	0	17	17	9	12
Basic	0	0	28	18	22	22
Below Basic	0	0	6	9	9	10
Far Below	0	0	5	5	2	4

## Downtown Value School Grade 8 Language Arts



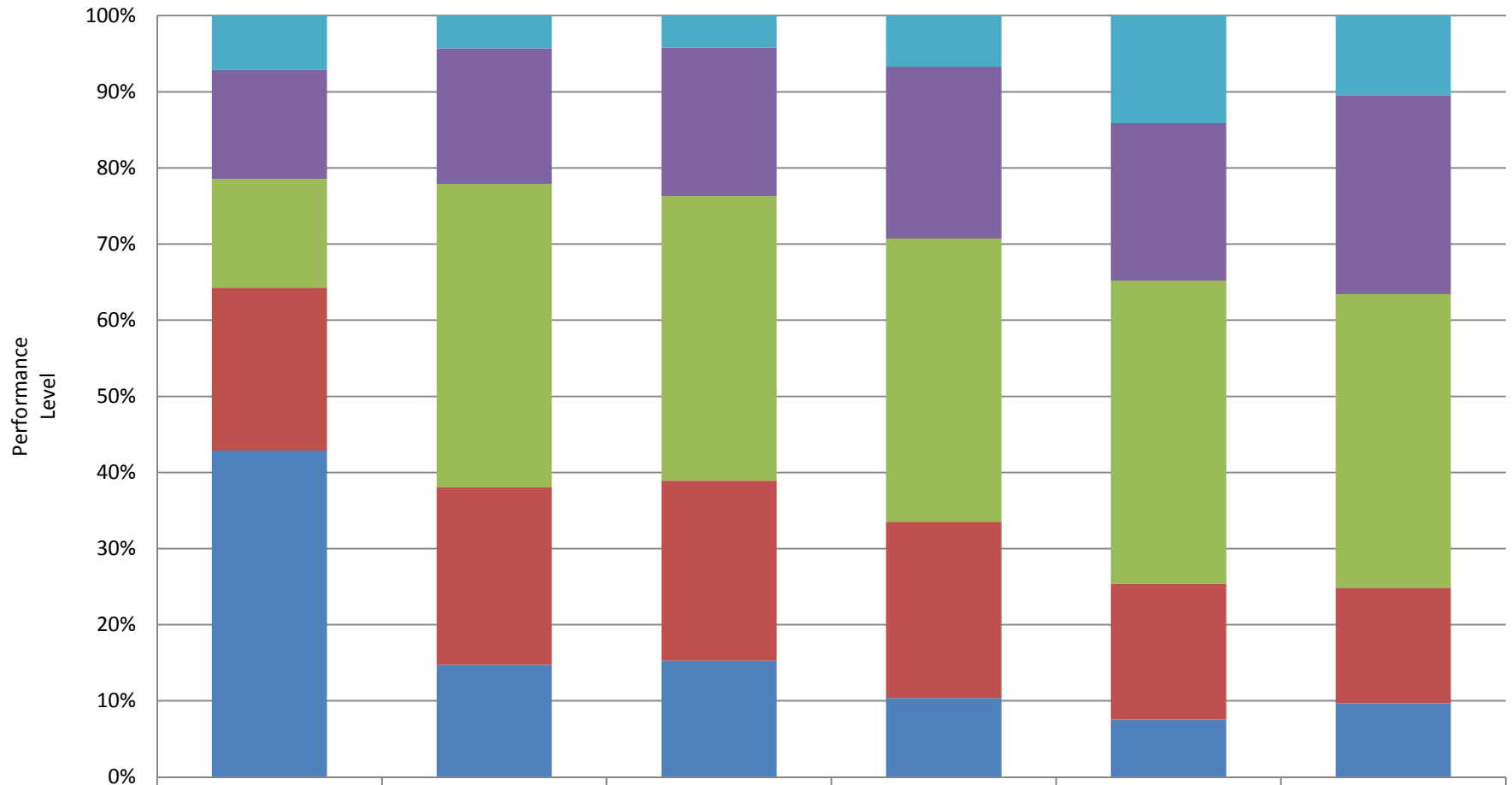
	2004	2005	2006	2007	2008	2009
Advanced	0	0	0	5	14	4
Proficient	0	0	0	15	16	15
Basic	0	0	0	24	16	24
Below Basic	0	0	0	4	3	9
Far Below	0	0	0	3	3	2

### Downtown Value School Grades 6-8 Language Arts



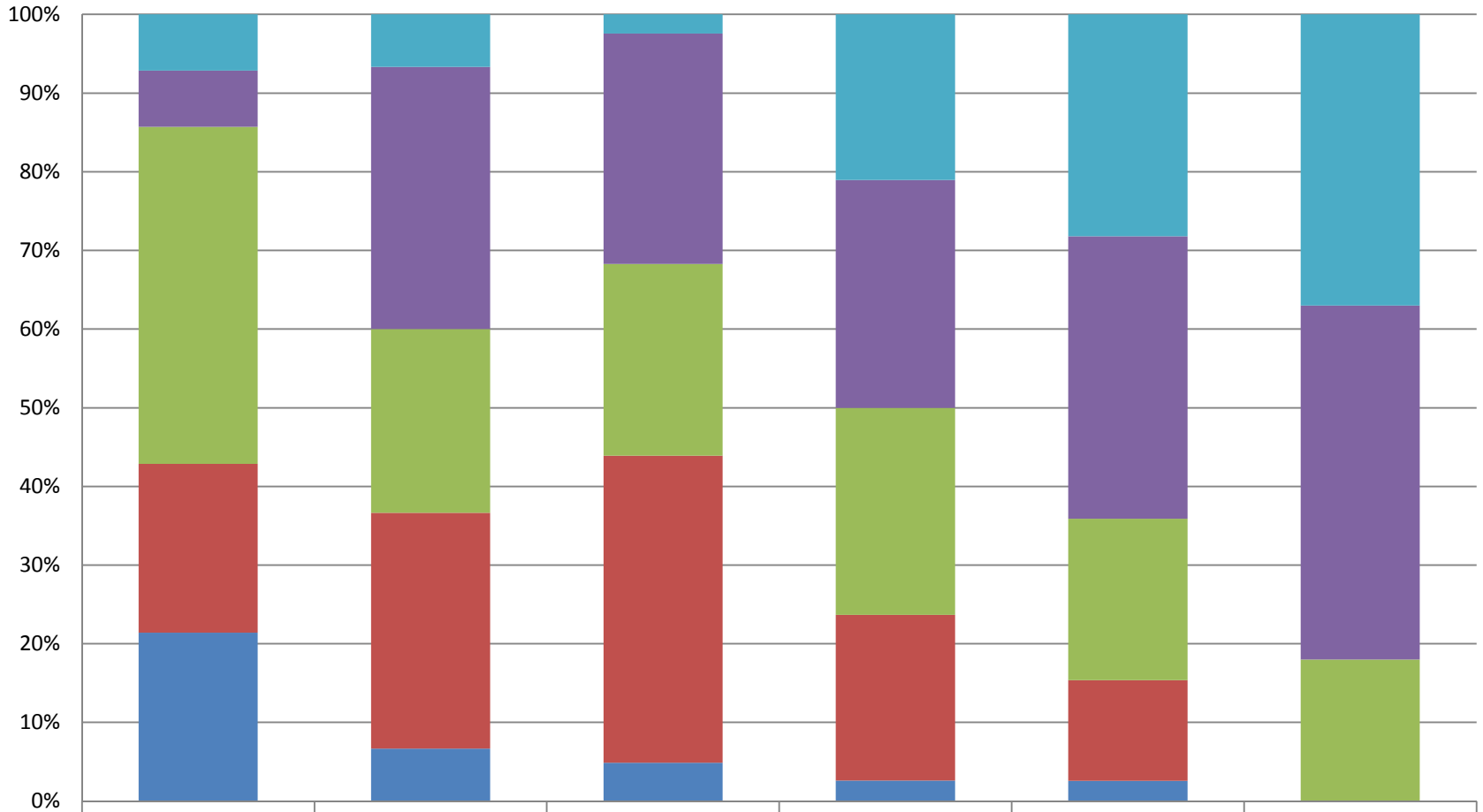
	2004	2005	2006	2007	2008	2009
Advanced	0	2	4	14	25	17
Proficient	0	14	24	42	34	39
Basic	0	22	47	66	60	70
Below Basic	0	10	21	26	21	36
Far Below	0	8	15	13	7	11

### Downtown Value School Grades 2-8 Language Arts



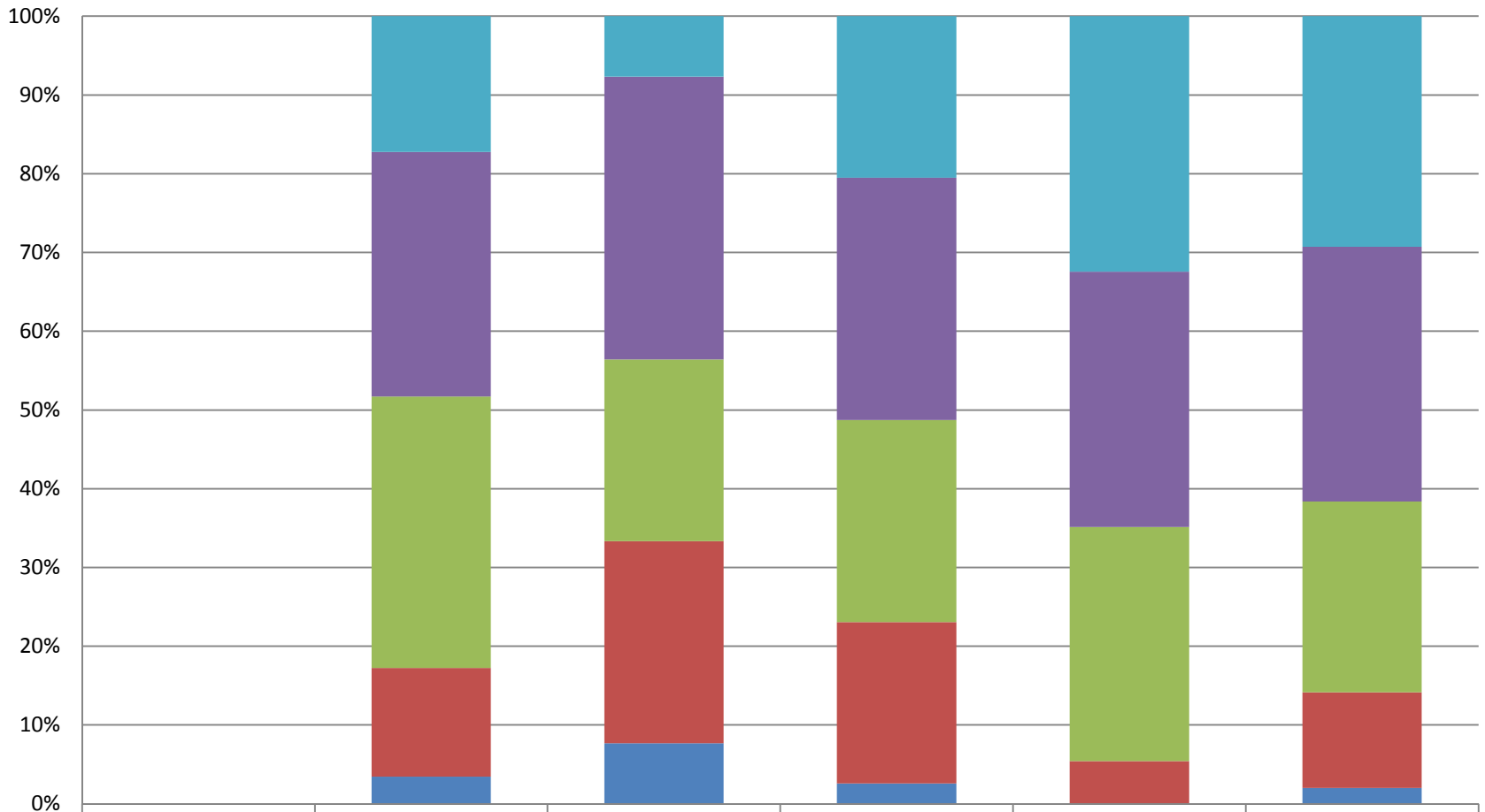
	2004	2005	2006	2007	2008	2009
Advanced	1	7	11	22	45	36
Proficient	2	29	51	74	66	90
Basic	2	65	98	122	127	133
Below Basic	3	38	62	76	57	52
Far Below	6	24	40	34	24	33

## Downtown Value School Grade 2 Math



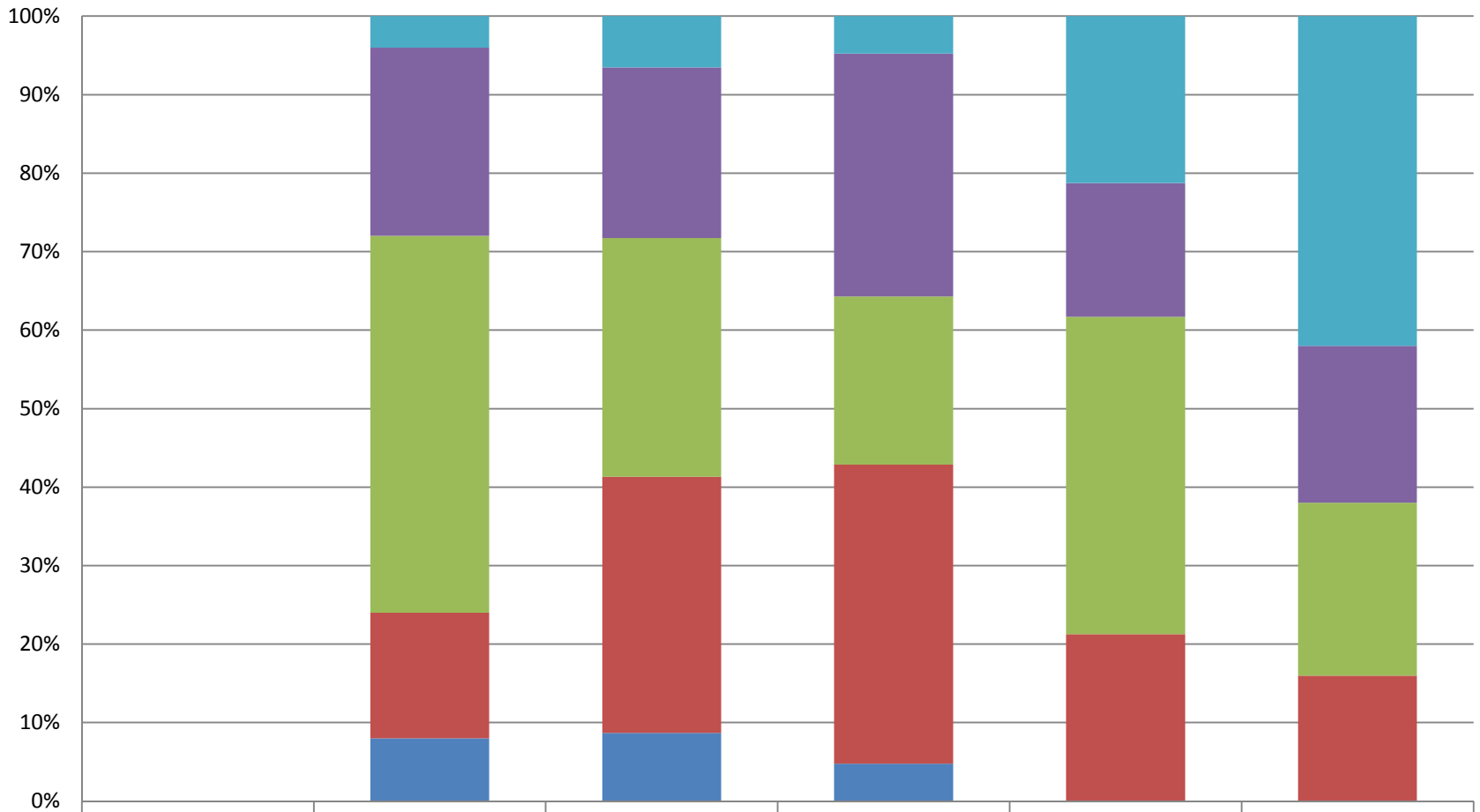
	2004	2005	2006	2007	2008	2009
Advanced	1	2	1	8	11	14
Proficient	1	10	12	11	14	17
Basic	6	7	10	10	8	7
Below Basic	3	9	16	8	5	0
Far Below	3	2	2	1	1	0

## Downtown Value School Grade 3 Math



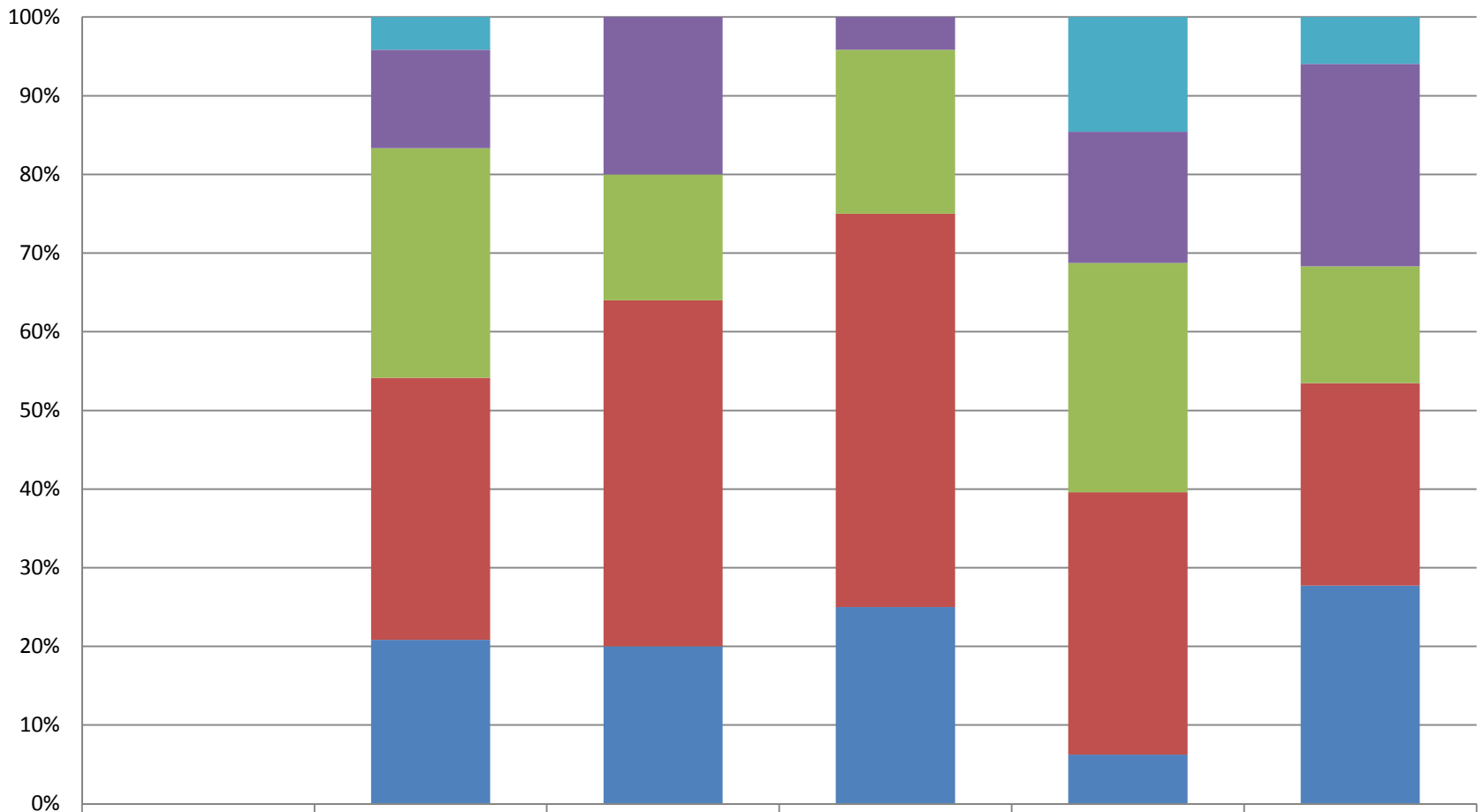
	2004	2005	2006	2007	2008	2009
Advanced	0	5	3	8	12	12
Proficient	0	9	14	12	12	13
Basic	0	10	9	10	11	10
Below Basic	0	4	10	8	2	5
Far Below	0	1	3	1	0	1

## Downtown Value School Grade 4 Math



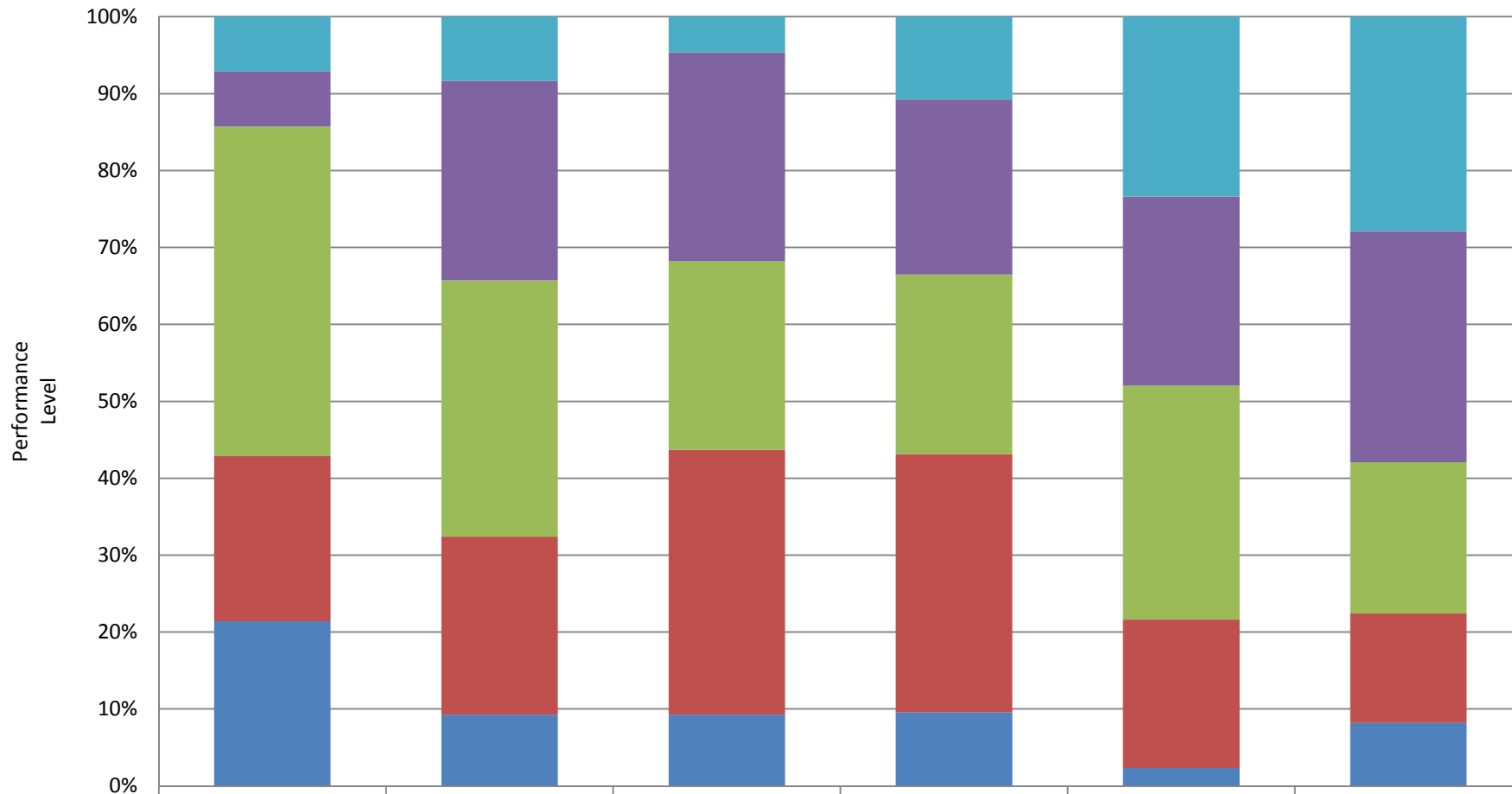
	2004	2005	2006	2007	2008	2009
Advanced	0	1	3	2	10	19
Proficient	0	6	10	13	8	9
Basic	0	12	14	9	19	10
Below Basic	0	4	15	16	10	7
Far Below	0	2	4	2	0	0

## Downtown Value School Grade 5 Math



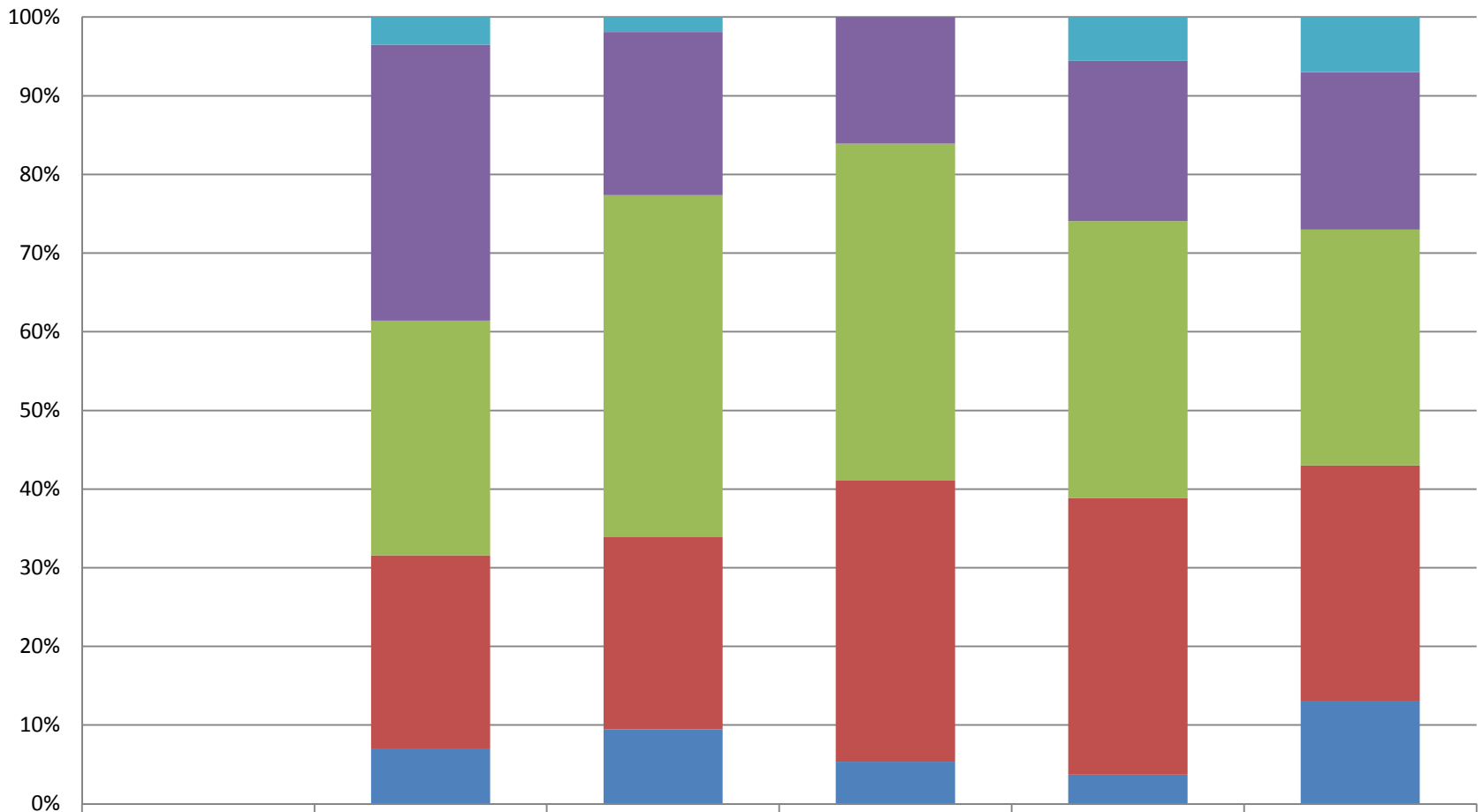
	2004	2005	2006	2007	2008	2009
Advanced	0	1	0	0	7	3
Proficient	0	3	5	2	8	12
Basic	0	7	4	10	14	7
Below Basic	0	8	11	24	16	12
Far Below	0	5	5	12	3	13

## Downtown Value School Grades 2-5 Math



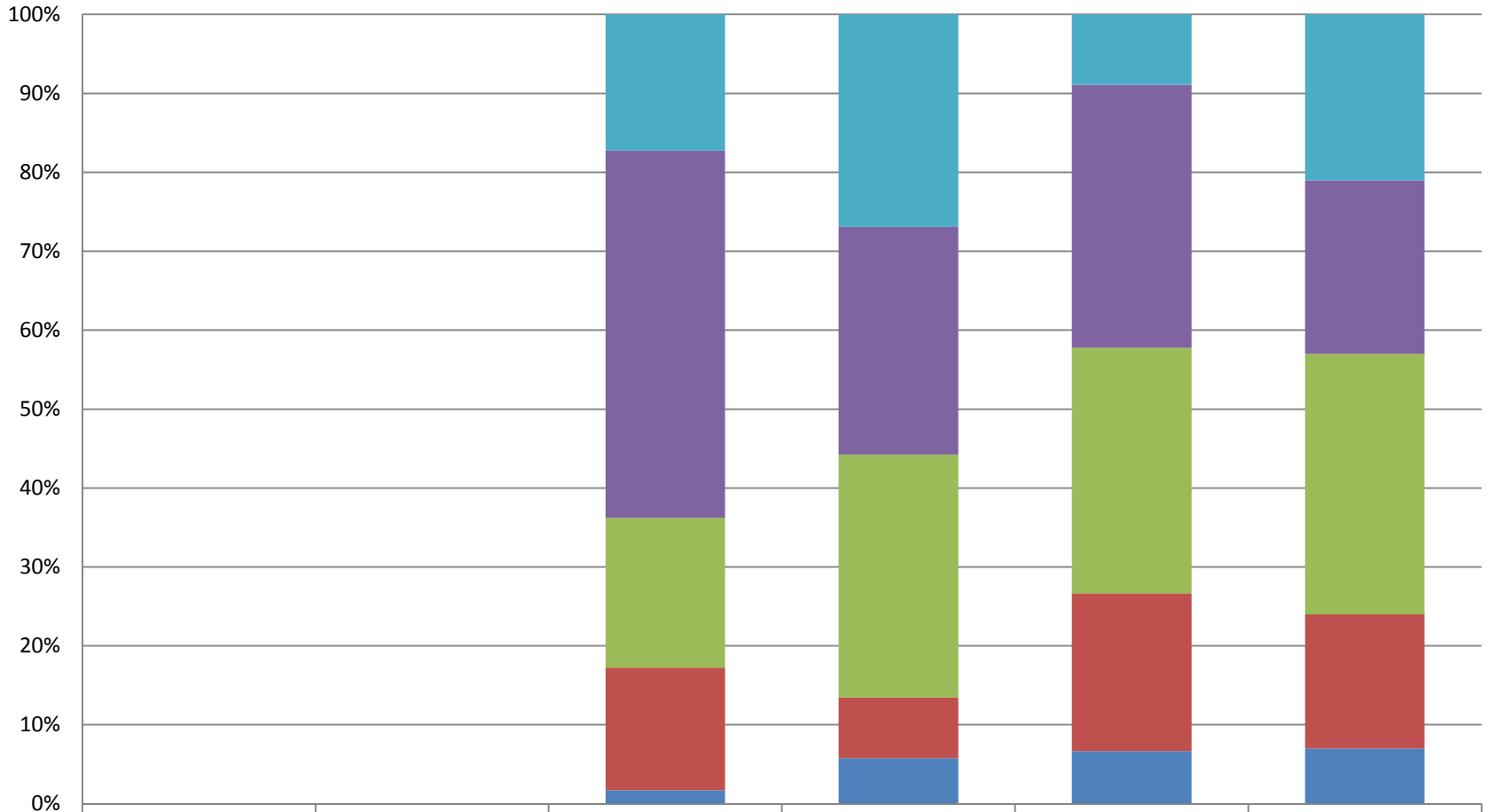
	2004	2005	2006	2007	2008	2009
Advanced	1	9	7	18	40	48
Proficient	1	28	41	38	42	51
Basic	6	36	37	39	52	34
Below Basic	3	25	52	56	33	24
Far Below	3	10	14	16	4	14

## Downtown Value School Grade 6 Math



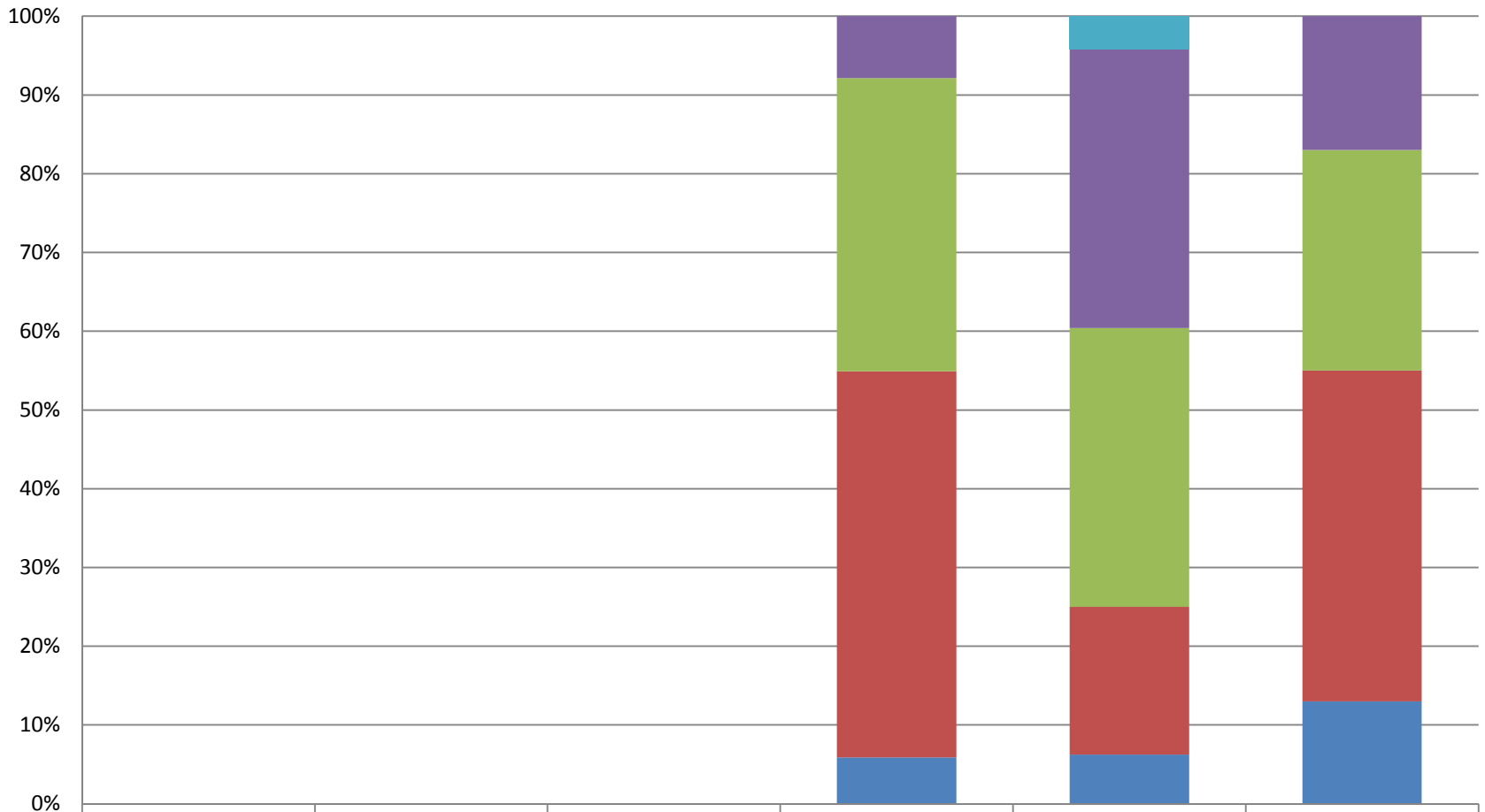
	2004	2005	2006	2007	2008	2009
Advanced	0	2	1	0	3	4
Proficient	0	20	11	9	11	12
Basic	0	17	23	24	19	18
Below Basic	0	14	13	20	19	18
Far Below	0	4	5	3	2	8

## Downtown Value School Grade 7 Math



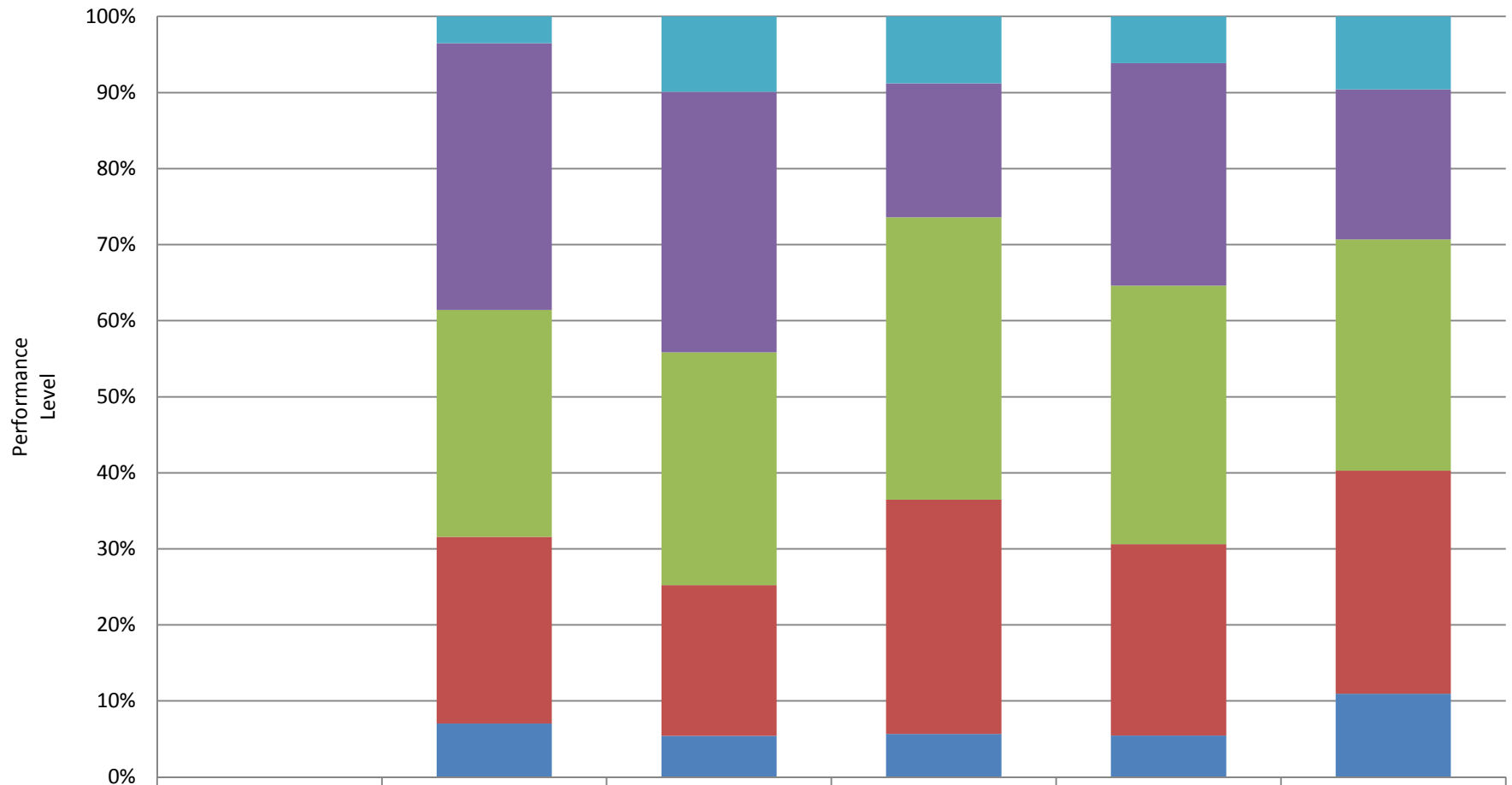
	2004	2005	2006	2007	2008	2009
Advanced	0	0	10	14	4	12
Proficient	0	0	27	15	15	13
Basic	0	0	11	16	14	19
Below Basic	0	0	9	4	9	10
Far Below	0	0	1	3	3	4

## Downtown Value School Grade 8 Math



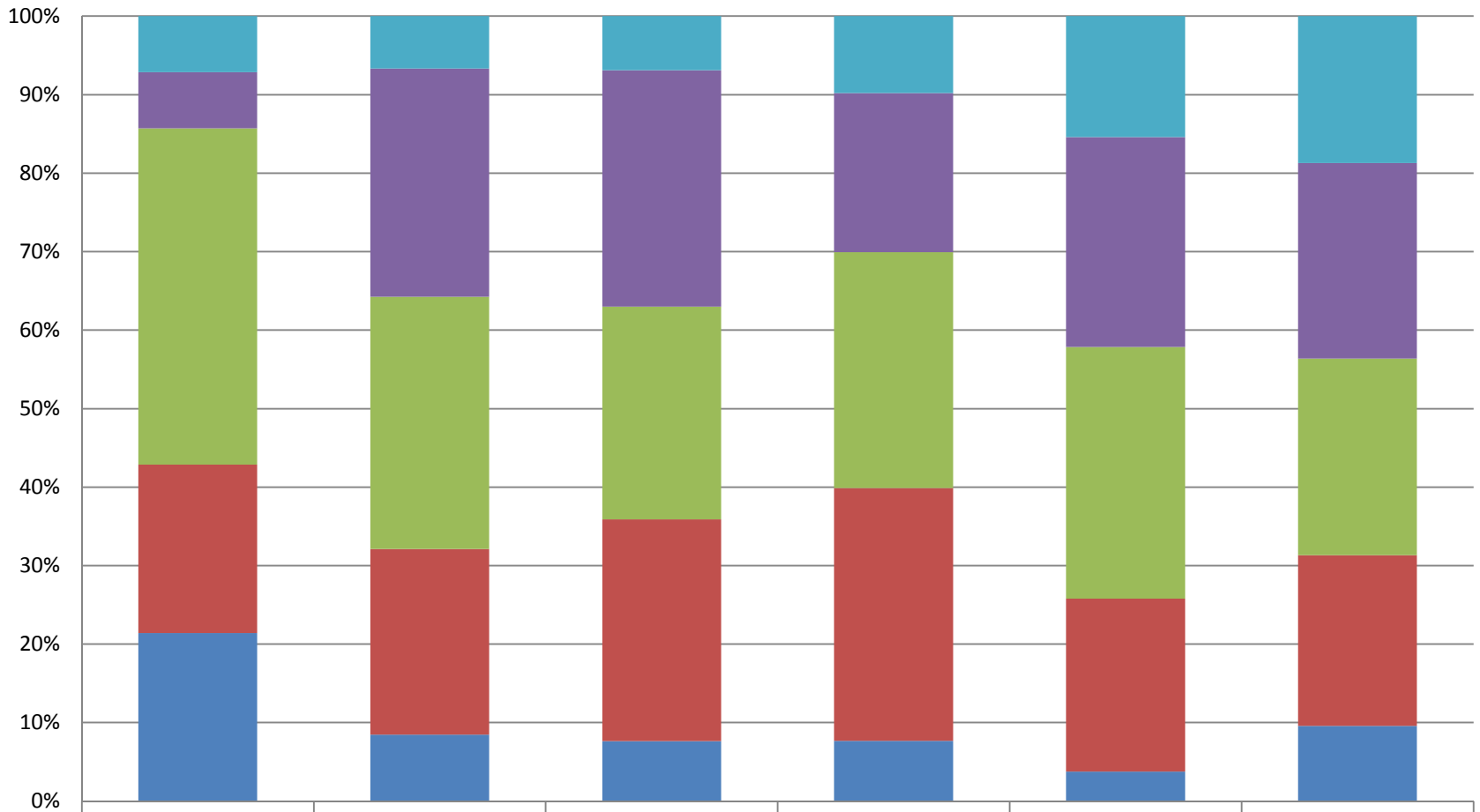
	2004	2005	2006	2007	2008	2009
Advanced	0	0	0	0	2	0
Proficient	0	0	0	4	17	9
Basic	0	0	0	19	17	15
Below Basic	0	0	0	25	9	22
Far Below	0	0	0	3	3	7

## Downtown Value School Grades 6-8 Math



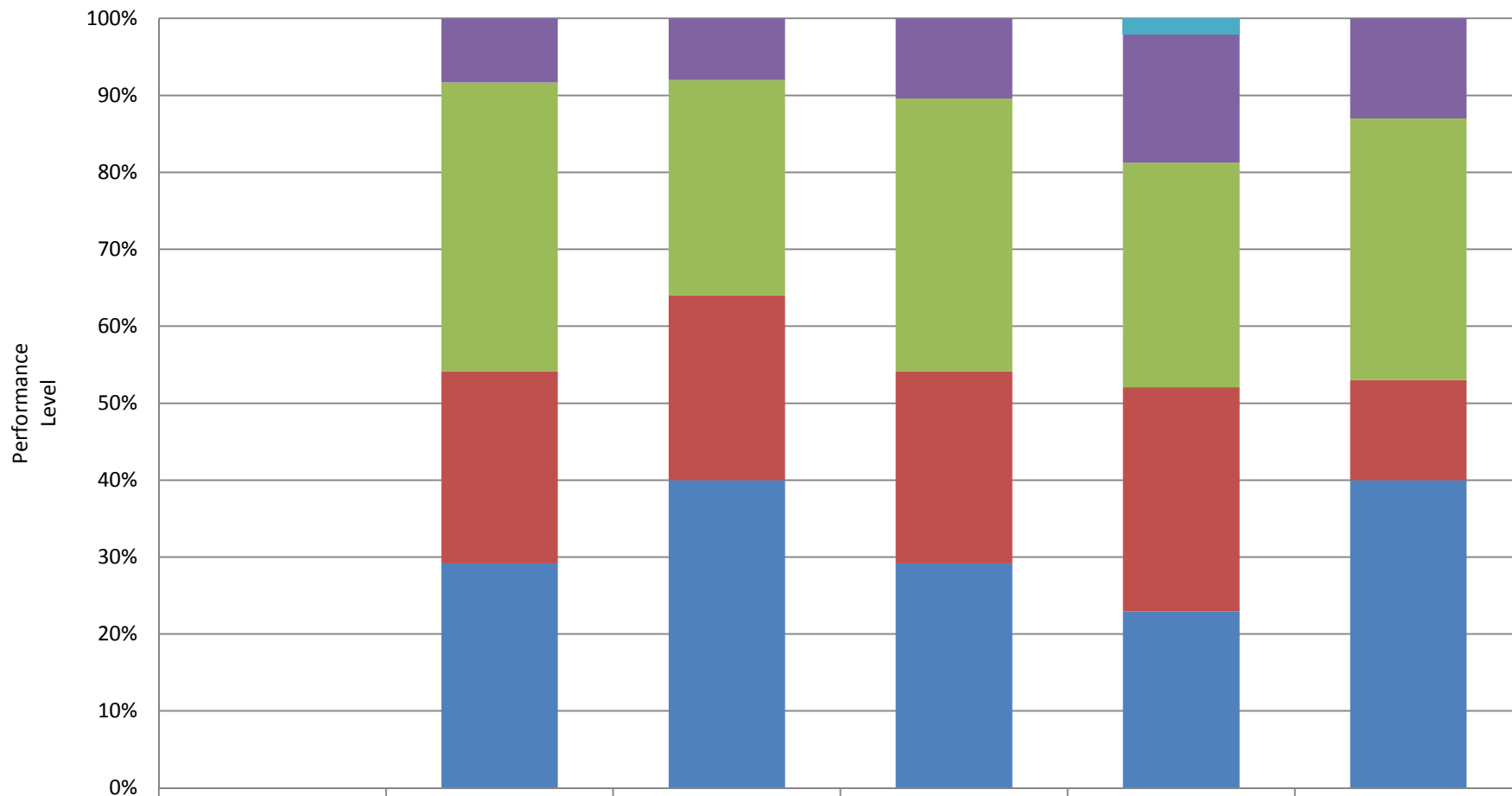
	2004	2005	2006	2007	2008	2009
Advanced	0	2	11	14	9	16
Proficient	0	20	38	28	43	34
Basic	0	17	34	59	50	52
Below Basic	0	14	22	49	37	50
Far Below	0	4	6	9	8	19

## Downtown Value School Grade 2-8 Math



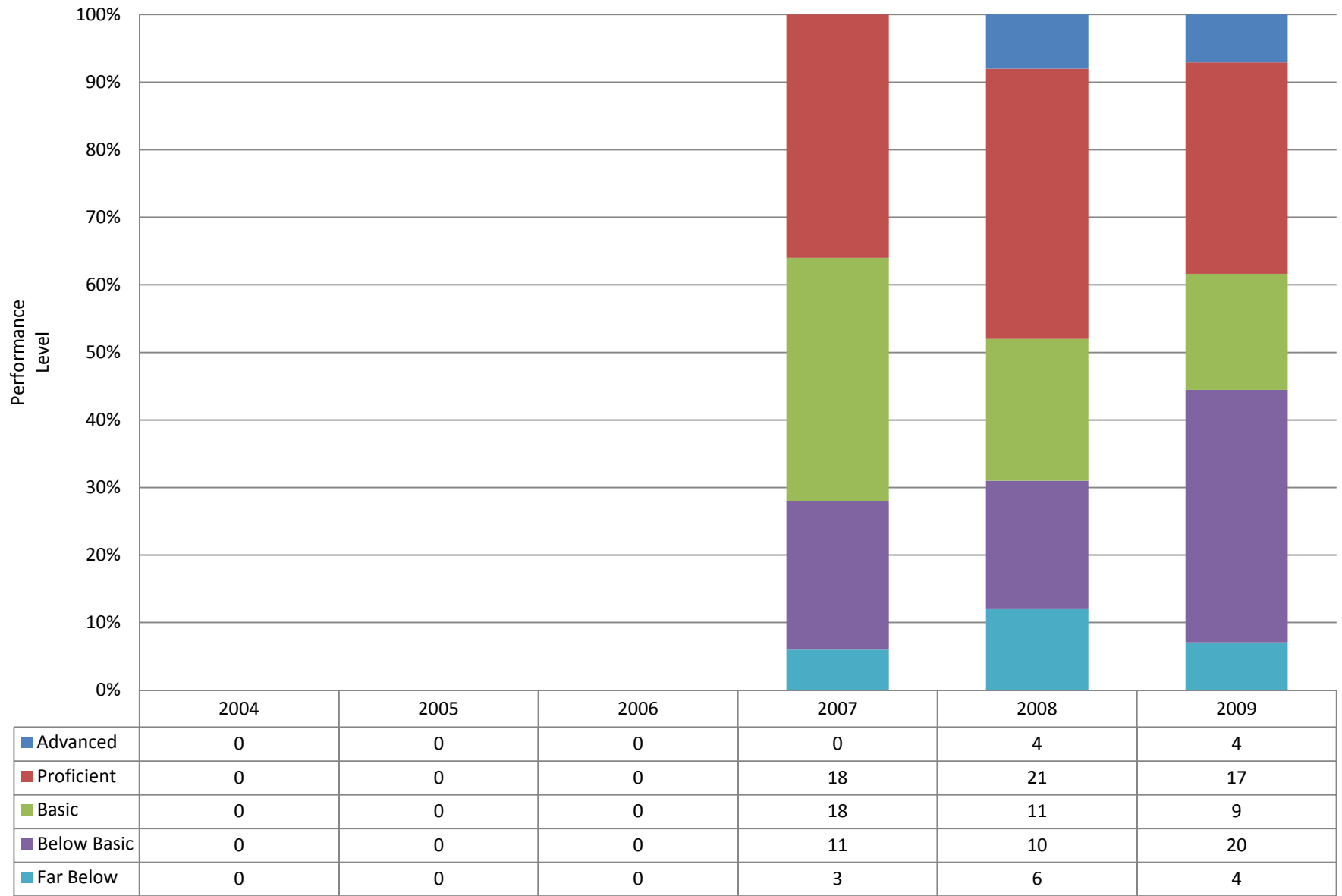
	2004	2005	2006	2007	2008	2009
Advanced	1	11	18	32	49	64
Proficient	1	48	79	66	85	85
Basic	6	53	71	98	102	86
Below Basic	3	39	74	105	70	74
Far Below	3	14	20	25	12	33

## Downtown Value School Grade 5 Science

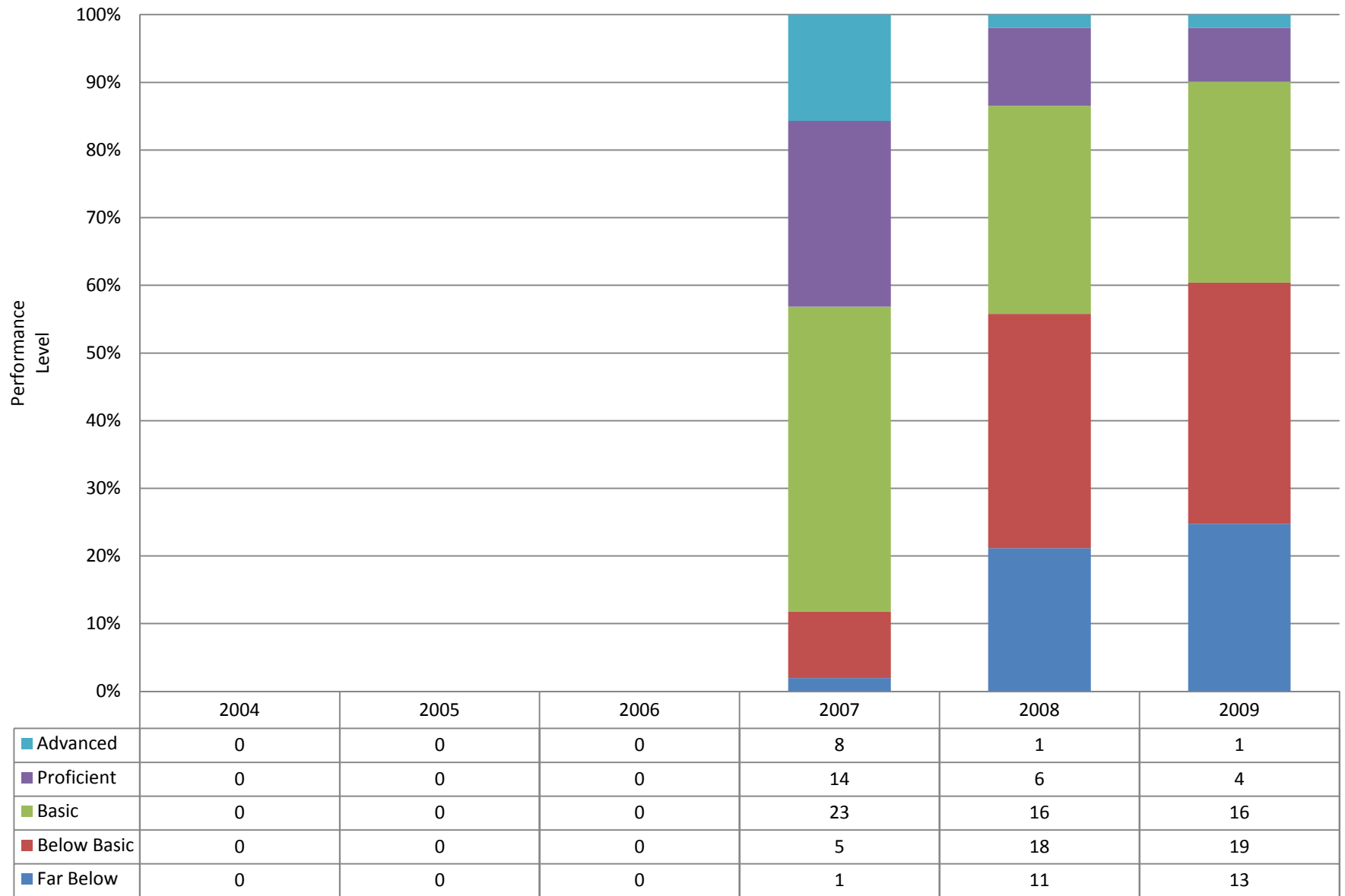


	2004	2005	2006	2007	2008	2009
Advanced	0	0	0	0	1	0
Proficient	0	2	2	5	8	6
Basic	0	9	7	17	14	16
Below Basic	0	6	6	12	14	6
Far Below	0	7	10	14	11	19

## Downtown Value School Grade 8 Science



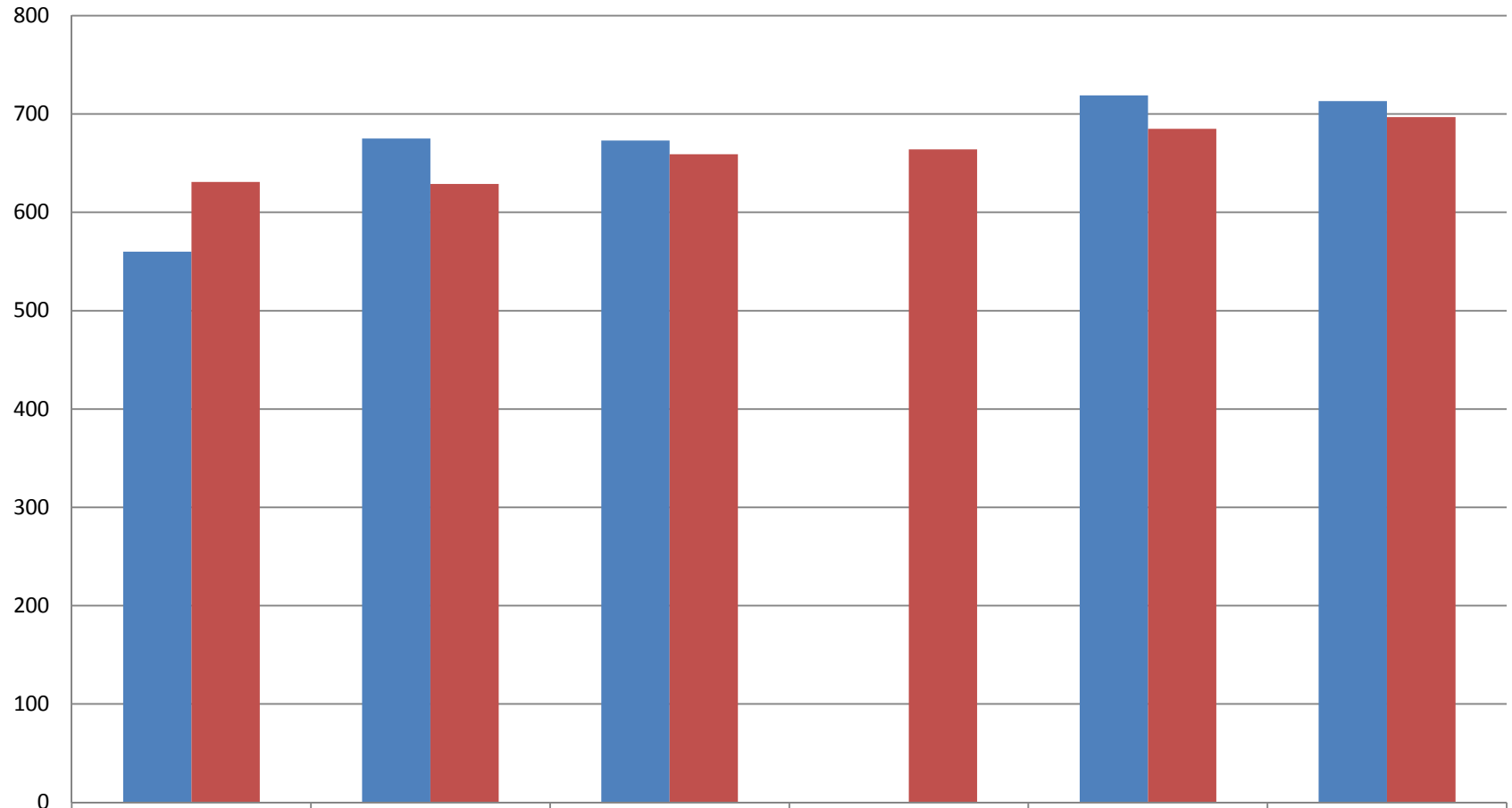
## Downtown Value School Grade 8 Social Studies



Demographic Comparison

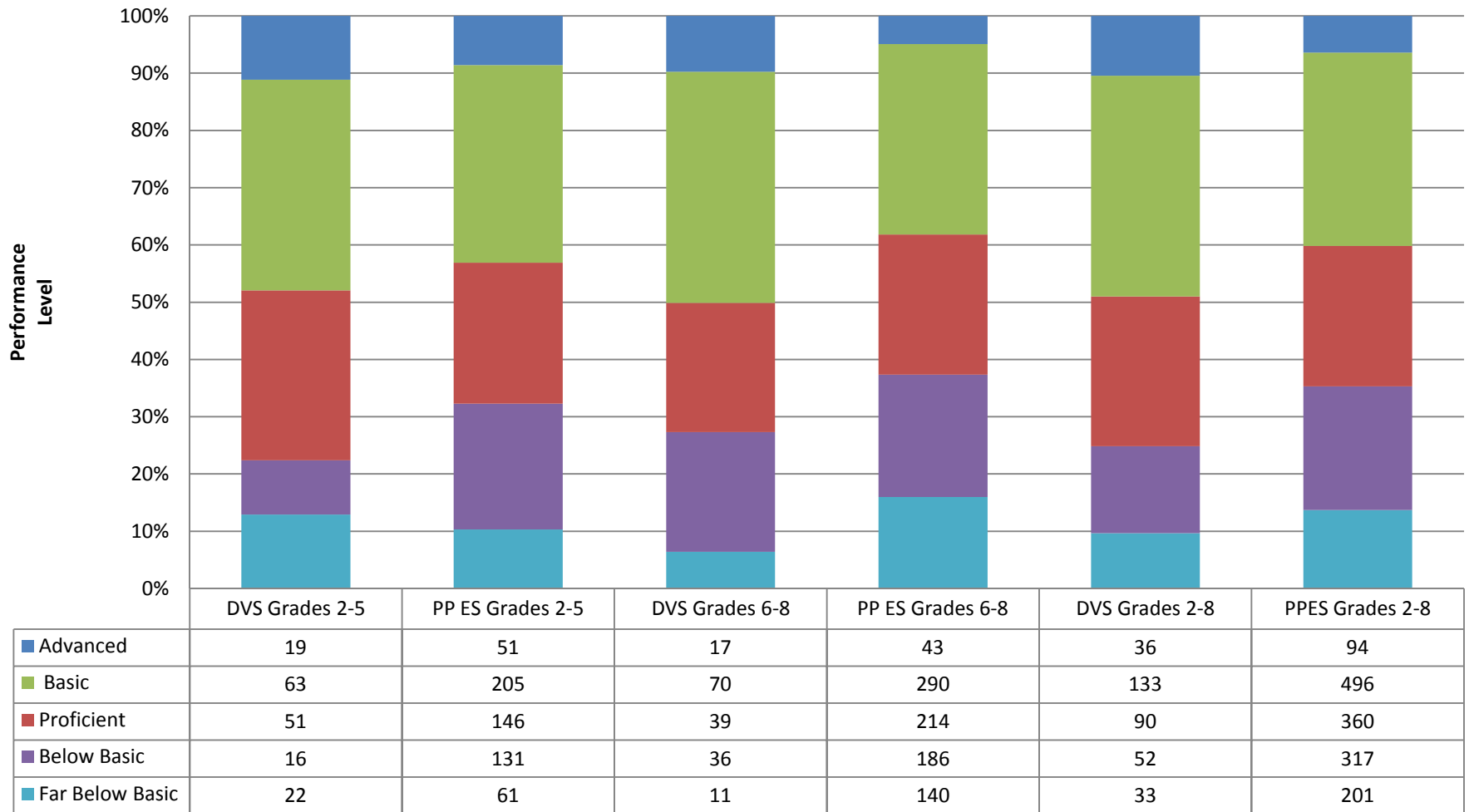
	Downtown Value School	Pio Pico Elementary
Enrollment	420	1,721
African American	0.5%	8.0%
Native American	0.0%	0.1%
Asian	0.0%	1.5%
Filipino	0.0%	0.4%
Hispanic	99.0%	89.2%
White	0.5%	0.3%
Multiple/ No Response	0.0%	2.0%
English Learners	36.0%	48.6%
Fluent English Proficient	59.3%	34.2%
Redesignated Fluent	86.5%	17.9%
Free/Reduce Price Eligible	89.7%	96.6%

**Downtown Value School (DVS)  
Pio Pico Elementary (PP ES)  
Academic Performance Index  
2004-2009**



	2004	2005	2006	2007	2008	2009
DVS API	560	675	673	0	719	713
PP ES API	631	629	659	664	685	697

## Comparison Between Downtown Value School (DVS) & Pio Pico Elementary (PP ES) English Language Arts 2009



## Comparison Between Downtown Value School (DVS) & Pio Pico Elementary (PP ES) Mathematics 2009

